

NBER WORKING PAPER SERIES

BUBBLY LIQUIDITY

Emmanuel Farhi
Jean Tirole

Working Paper 16750
<http://www.nber.org/papers/w16750>

NATIONAL BUREAU OF ECONOMIC RESEARCH
1050 Massachusetts Avenue
Cambridge, MA 02138
January 2011

This paper is a much revised version of an earlier draft titled “Competing Liquidities: Corporate Securities, Real Bonds and Bubbles”. We thank Fernando Alvarez, Marios Angeletos, Pol Antras, Gadi Barlevy, Ricardo Caballero, V.V. Chari, Gita Gopinath, Robert King, Anton Korinek, John Leahy, Guido Lorenzoni, Kiminori Matsuyama, Adriano Rampini, Guillaume Rocheteau, Kjetil Storesletten, Ivan Werning, Wei Xiong, four anonymous referees, and participants at various seminars and conferences for useful comments. The financial support of the FdR IDEI-SCOR research project “Market Risk and Value Creation” is gratefully acknowledged. The views expressed herein are those of the authors and do not necessarily reflect the views of the National Bureau of Economic Research.

NBER working papers are circulated for discussion and comment purposes. They have not been peer-reviewed or been subject to the review by the NBER Board of Directors that accompanies official NBER publications.

© 2011 by Emmanuel Farhi and Jean Tirole. All rights reserved. Short sections of text, not to exceed two paragraphs, may be quoted without explicit permission provided that full credit, including © notice, is given to the source.

Bubbly Liquidity
Emmanuel Farhi and Jean Tirole
NBER Working Paper No. 16750
January 2011
JEL No. E2,E44

ABSTRACT

This paper analyzes the possibility and the consequences of rational bubbles in a dynamic economy where financially constrained firms demand and supply liquidity. Bubbles are more likely to emerge, the scarcer the supply of outside liquidity and the more limited the pledgeability of corporate income; they crowd investment in (out) when liquidity is abundant (scarce). We analyze extensions with firm heterogeneity and stochastic bubbles.

Emmanuel Farhi
Harvard University
Department of Economics
Littauer Center
Cambridge, MA 02138
and NBER
efarhi@harvard.edu

Jean Tirole
Institut d'Economie Industrielle
Bureau MF529 - Bat. F
21 allées de Brienne
31000 Toulouse
FRANCE
tirole@cict.fr

Bubbly Liquidity*

Emmanuel Farhi Jean Tirole †

December 25, 2010

Abstract

This paper analyzes the possibility and the consequences of rational bubbles in a dynamic economy where financially constrained firms demand and supply liquidity. Bubbles are more likely to emerge, the scarcer the supply of outside liquidity and the more limited the pledgeability of corporate income; they crowd investment in (out) when liquidity is abundant (scarce). We analyze extensions with firm heterogeneity and stochastic bubbles.

Keywords: liquidity, bubbles.

JEL numbers: E2, E44.

I Introduction

Despite some progress in our understanding of asset price bubbles, many challenging questions are left unanswered. What role do macroeconomic conditions and financial institutions play in the emergence of bubbles? Is the classic theory of rational bubbles correct in predicting that bubbles raise interest rates and crowd out productive investment?¹ Symmetrically,

*This paper is a much revised version of an earlier draft titled “Competing Liquidities: Corporate Securities, Real Bonds and Bubbles”. We thank Fernando Alvarez, Marios Angeletos, Pol Antras, Gadi Barlevy, Ricardo Caballero, V.V. Chari, Gita Gopinath, Robert King, Anton Korinek, John Leahy, Guido Lorenzoni, Kiminori Matsuyama, Adriano Rampini, Guillaume Rocheteau, Kjetil Storesletten, Ivan Werning, Wei Xiong, four anonymous referees, and participants at various seminars and conferences for useful comments. The financial support of the FdR IDEI-SCOR research project “Market Risk and Value Creation” is gratefully acknowledged.

†Farhi: Harvard University and NBER; efarhi@fas.harvard.edu. Tirole: Toulouse School of Economics, jean.tirole@tse-fr.eu.

¹While the interest rate response is rather undisputed, some famous episodes seem consistent with a crowding in hypothesis. For example, Japan’s bubble came with not only high interest rates but also

what are the consequences of bubble crashes? Do bubbles benefit/hurt some sectors more than others? What is the appropriate test for the existence of bubbles? Is there a link between dynamic inefficiency and the possibility of bubbles?

This paper investigates these questions by adding to the standard growth model an asynchronicity between firms' access to and need for cash. While this asynchronicity is perfectly resolved by capital markets in classic growth theory, capital markets are here imperfect: Factors such as agency costs prevent firms from pledging the entirety of the benefits from investment to outside investors, resulting in credit rationing. The anticipation of credit rationing in turn gives rise to a familiar demand for liquidity (or stores of value; we will use the two terms interchangeably). Firms also supply liquidity by issuing securities, i.e. claims to their future revenues. Each firm is at times a net demander of liquidity or a net supplier of liquidity.

At the heart of this paper is the interplay between different forms of liquidity. Specifically, we investigate the interaction of *inside liquidity* (securities issued by financially constrained firms), *outside liquidity* (assets that originate in a different sector in the economy), and *bubbles*. Literally speaking, bubbles are a form of outside liquidity, but because they are the focus of this paper, we choose to single them out.

The impact of outside liquidity on investment and economic activity accordingly hinges on the relative potency of two effects: a liquidity effect and a leverage effect. On the demand side, the firms' hoarding of liquidity makes them benefit from an increase in the supply, and a reduction in the price of liquidity. On the supply side, their issuing securities to finance investment makes them vulnerable to high interest rate conditions: An increase in outside liquidity raises interest rates and competes with the securities issued by the firms, reducing their leverage.

This paper makes several contributions. First, as we just discussed, it studies the interplay between inside and outside liquidity. Outside liquidity helps firms address the asynchronicity between their access to and need for cash—the liquidity effect—but also competes for savings with productive investment—the leverage effect. We show that the liquidity effect dominates when outside liquidity is abundant.

Second, the paper shows that bubbles are more likely to exist and can be larger when agency problems are severe (firms can only pledge a small fraction of their future revenues),

vigorous investment and growth; when it burst, the country went through a prolonged deflation and recession. Similarly, in the US, the Internet and housing bubbles were accompanied with economic booms; interest rates and investment fell when these bubbles burst.

outside liquidity is scarce, and when the demand for liquidity is high (the net worth of firms is high).²

Third, bubbles are a form of outside liquidity. They are more likely to crowd the financially-constrained corporate sector's investment in (out), the more (less) abundant the outside liquidity.

Fourth, the crash of a bubble is accompanied by low interest rates and high leverage. It has a negative effect on firms' financial net worth, and further reduces liquidity. Consequently, even in a risk neutral environment, a stochastic bubble carries a liquidity premium (it features positive excess returns relative to the risk-free rate) since it pays little or zero in states where internal funds can be levered the most. Furthermore, bubble bursts can be endogenously triggered by adverse shocks to corporate net worth, resulting in a liquidity dy-up: financial disruptions amplify real disturbances.

Fifth, bubbles, and more generally outside liquidity, impact firms differently. Firms with limited ability to pledge future cash-flows are little hit by competing claims as they issue no or few securities. Accordingly, they benefit more from a bubble and are hurt more by a bubble crash.

Finally, in standard models of rational bubbles (e.g. Tirole 1985), bubbles can occur only if the economy is dynamically inefficient so that tests aimed at detecting dynamic inefficiency (Abel et al 1989) can be used to determine if bubbles are possible. In our environment, Abel et al. (1989)'s finding that the productive sector disgorges at least as much as it invests does indicate that the economy is dynamically efficient. The possibility of bubbles is determined by the condition that the interest rate be higher than the growth rate of the economy, in conformity with Santos and Woodford (1997).³ But with imperfect capital markets, the economy can be dynamically efficient, and at the same time the interest rate can be lower than the growth rate of the economy. This is because the social rate of return on internal funds exceeds that on borrowed funds; therefore the social rate of return on investments is higher than the market interest rate when returns can be only imperfectly collateralized. As a result, bubbles are possible even when the economy is dyanmically efficient.⁴

²Accordingly, the much discussed "global savings glut" may have contributed to the recent housing bubble in the U.S. by creating a shortage of liquidity (stores of value). The low real interest rates that accompanied this episode are consistent with this narrative. To be certain, there are also other causes (failure of prudential regulation, etc.).

³Moreover, our agency-based approach argues in favor of the use of (relatively low) interest rates received by outside investors such as the interest rate on riskless bonds.

⁴Typically, bubbles do not lead to Pareto improvements. For example, the holders of outside liquidity in general lose from the emergence of a bubble, since it increases interest rates and lowers the price at which

The paper proceeds as follows. Section II sets up the model and describes the solution when there are no bubbles. It characterizes its unique steady state and derives some key comparative statics results. Section III introduces the possibility of rational asset price bubbles. It derives the dynamics with bubbles and describes the properties of the unique bubbly steady state. Section IV first analyzes how bubbles affect the cross section of firms when there is heterogeneity in pledgeability; it then introduces stochastic bubbles and derives the mechanics of a bubbly boom-bust episode. Section V checks the robustness of the results in several variants of the model. Finally, Section VI summarizes the main insights and discusses alleys for research.

Relation to the literature. The paper builds on a number of contributions. Most obviously, it brings together the literature on (rational) bubbles and that on aggregate liquidity. The leverage effect, however, differs from the related competition effect featured in Diamond (1965)'s celebrated analysis of national debt, and prominent in the theory of rational bubbles (Tirole 1985). The standard competition effect captures the idea that unconstrained firms want to invest less when interest rates are high. Our leverage effect has it that high interest rates aggravate credit rationing and so firms cannot invest as much. In particular, Diamond's competition effect is inconsistent with the existence of a liquidity effect.

The role of stores of values in supporting investment when income is not fully pledgeable has been stressed for example by Woodford (1990), Holmström-Tirole (1998) and a large recent literature, including independent contributions by Kiyotaki-Moore (2008) and Kocherlakota (2009). In Woodford's and Kocherlakota's contributions, which are most closely related to ours, firms are net demanders of liquidity and there is always a potential shortage of stores of value. These two papers assume that firms cannot supply liquidity (they have zero leverage) by positing that none of the future cash flow is pledgeable to investors and so firms do not issue securities. The possibility of leverage is central to many of our insights (existence of liquidity and leverage effects, conditions for the existence of bubbles, impact of bubbles on the cross section of firms).⁵

Saint-Paul (2005) shows that government debt (a store of value), while deterring capital accumulation, can increase the efficiency of the financial sector. Entrepreneurs can buy

they can sell them. Similarly, equilibria with bubble crashes are usually not Pareto dominated by equilibria with no bubble crash.

⁵As we show in Appendix A3, the mechanism through which bubbles may crowd investment in is very different in our model and in Woodford (1990) or Kocherlakota (2009). Moreover, we show that investment at the bubble-free steady state features a discontinuity at the point of zero pledgeability.

public debt and use it as collateral. The existence of collateral reduces agency costs (Saint-Paul uses the costly-state-verification model as an illustration). Accordingly, public debt boosts growth over a range of parameters.

The paper shares with Kiyotaki-Moore (1997) the idea that investment decisions are intertemporal complements. In Kiyotaki-Moore, tomorrow's investment will raise the price of the store of value, which is used as an input in the production process; this future increase in the price of the store of value raises the firms' wealth and thereby today's investment. In our paper, it is yesterday's investment that supports today's investment, by creating securities that firms can hoard to meet their liquidity needs. Thus, Kiyotaki and Moore's dynamics are forward looking while ours are essentially backward looking (in the absence of bubbles). Also, Kiyotaki-Moore's focus is rather different as it has no bubbles.

The rational bubble literature has addressed the crowding-out critique in alternative ways.⁶ Bubbles are attached to investment in Olivier (2000) and to entrepreneurship in Ventura (2003), generating an incentive and a wealth effect respectively; in both papers, bubbles can crowd investment in. Saint-Paul (1992), Grossman-Yanagawa (1993), and King-Ferguson (1993) address the dynamic-efficiency critique by studying endogenous growth models with bubbles, in which the social return on investment exceeds the private return due to spillovers. The long-term rate of interest can then be smaller than the rate of growth of the economy, and yet the economy be dynamically efficient. However, the condition for the existence of bubbles is still determined by the condition that the growth rate of the economy be higher than the interest rate. Our results are reminiscent of their findings. However, in our paper, the reason that the social rate of return on investment is higher than the interest rate is fundamentally different: it does not stem from an externality in production but rather from an agency problem such as moral hazard or limited commitment. As a result only a fraction of the return to investment can be pledged to outside investors, and the rest is appropriated by entrepreneurs (and more generally by insiders of the firm in a broader interpretation of the model). The interest rate reflects the fraction of the return to investment which is pledgeable to outside investors, whereas the social rate of return on investment accounts for the total return on investment—both the pledgeable part and the unpledgeable part which is

⁶Other theories based on agency problems and asymmetric information as well as behavioral models have proliferated in recent years. A partial list includes Abreu-Brunnermeier (2003), Allen-Gale (2000), Allen-Gorton (1993), Allen-Morris-Postlewaite (1992), Barlevy (2009), Conlon (2004), Dobles-Madrid (2009), and Scheinkman-Xiong (2004). See LeRoy (2004) for a good survey. These theories typically reach more precise predictions than rational bubbles models regarding which assets are more likely to feature bubbles, and have a rich array of implications for volume, turnover etc. However, these contributions have for the most part retained a more microeconomic focus, and have not analyzed the liquidity-provision function of bubbles.

appropriated by entrepreneurs.

Caballero-Krishnamurthy (2006) develops a theory of bubbles in emerging markets. They introduce, as we do, an investment driven demand for liquidity and show that in the presence of fragile (stochastic) bubbles, the economy overinvests in the bubbly asset and is overexposed to bubble crashes due to a pecuniary externality.

Our paper also sheds some light on the debate as to whether monetary authorities should try to lean against bubbles (or, in a more extreme form, try to make them pop) by raising interest rates or denying access to the discount window to banks that extend too many loans. Some scholars (e.g., Bernanke 2002, Bernanke-Gertler 2000, 2001, Gilchrist-Leahy 2002) argue that the central bank should not pay attention to asset prices unless these signal future inflation; others (e.g., Bordo-Jeanne 2002) are in favor of a moderate reaction.⁷ All concur that a restrictive policy leads to a lower output and a significant risk of collateral-induced credit crunch. Our model is consistent with this premise, as the pricking of the bubble leads to a collateral shortage and reduced investment and production.

Our paper is related to several strands of the monetary literature. It has been well known since Allais (1947)'s and Samuelson (1958)'s seminal contributions that there exists economies in which money has a positive value in spite of the fact that it is intrinsically useless. Overlapping generations models with money have been later thoroughly developed by Gale (1973), Cass-Okuno-Zilcha (1979), Wallace (1980), Hahn (1982), Balasko-Shell (1981), Grandmont (1985), among others. A textbook treatment can be found in Azariadis (1993). In those models, money can be readily reinterpreted as a rational bubble, a fact long recognized in the rational bubbles literature. Our paper is also related to a more recent strand of the monetary theory literature often referred to as New Monetarist Economics. This literature emphasizes the role of money and other assets in overcoming trading frictions in economies with decentralized trade. Because of problems related to the double coincidence of wants, imperfect commitment, enforcement, and record keeping, unsecured credit is not viable and some trades must quid pro quo, involving either the sale of an asset or a collateralized loan. Such setups give rise to endogenous liquidity premia. Williamson-Wright (2010) and Nosal-Rocheteau (2010) provide excellent surveys. Most closely related to us is Rocheteau-Wright (2010). They build on the extension by Rocheteau-Wright (2005) of the model of Lagos-Wright (2005), and include endogenous participation decisions. Some of their results resemble ours. Indeed, in their model, liquid assets can trade above their fundamental value if the aggregate supply of liquid assets is low. They also generate multiple

⁷This is only a partial list of references on the topic. See Adrian-Shin (2008) for a more complete list.

stationary equilibria where asset prices and output are positively related. Moreover, they also construct non-stationary equilibria, even when fundamentals are deterministic and non-stochastic. These include equilibria with price trajectories that resemble bubbles growing and bursting. An important difference with us, is that, using the language of our model, they focus on liquidity effects and assume away leverage effects.⁸

II The model

II.1 Description

Demographics, preferences and technology. Our model has overlapping generations of risk-neutral entrepreneurs. The population is constant (all our results generalize to the case of positive population growth). Entrepreneurs live for three periods: young, middle-aged and old. For simplicity, we assume that entrepreneurs consume only when old. They are risk-neutral and seek to maximize expected consumption. Each generation is indexed by the period in which it is born. Time runs from $t = 0$ to $t = \infty$. At each date $t = 0, 1, \dots, \infty$, the economy is inhabited by the old (generation $t - 2$), the middle-aged (generation $t - 1$), and the young (generation t).

There is a single good in the economy. When young, entrepreneurs of generation t are endowed with A units of good (wealth). When middle-aged, they invest i_{t+1} to produce $\rho_1 i_{t+1}$ when old. However, only a fraction $\rho_0 i_{t+1} < \rho_1 i_{t+1}$ of the return on investment is pledgeable, where $\rho_1 > \rho_0 > 0$.

Market for liquidity. In every period, a market for liquidity allows entrepreneurs to lend and borrow, subject to the borrowing constraints imposed by the limited pledgeability of their future income. The interest rate prevailing between date t and date $t + 1$ is $1 + r_{t+1}$. In equilibrium, it will always be the case that the pledgeability parameter ρ_0 is strictly less than $1 + r_{t+1}$, otherwise middle-aged entrepreneurs could achieve an infinite investment scale. Because pledgeability is limited, firms can only partially rely on outside financing at the investment stage. We will only analyze equilibria where $\rho_1 > 1 + r_{t+1}$ so that the investment opportunities of entrepreneurs are strictly positive net-present-value projects.

The ingredients that determine supply and demand in the market for liquidity are as

⁸More precisely, the absence of leverage effects is tied to their assumption that shares in firms provide no liquidity service.

follows. The asynchronicity between the availability of cash and investment opportunities, together with the imperfect pledgeability of cash flows from investment, lead to a demand for liquidity (stores of value) from young entrepreneurs: they purchase assets in their youth when they have wealth,⁹ and sell them in their middle age when they have an attractive investment opportunity that can only be partially financed by the market. In turn, middle-aged entrepreneurs are also suppliers of liquidity: they supply assets which capitalize the pledgeable cash flows from their investment project.

At the heart of this paper is the interplay between different forms of liquidity. Specifically, we investigate the interaction of *inside liquidity* (assets produced by middle-aged entrepreneurs of generation t when they pledge a fraction of the return on their investment project), *outside liquidity* (assets that originate in a different sector in the economy), and *bubbles*. Literally speaking, bubbles are a form of outside liquidity, but because they are the focus of this paper, we choose to single them out.

We model outside liquidity as follows. At each point of time t , there is a net supply of l units of Lucas trees or “rents”: date- t trees each pay one unit of good at date $t + 1$. These assets will be purchased in equilibrium by young entrepreneurs so as to be able to invest when middle-aged. We will focus on the case where $l \geq 0$. In extensions in Sections V.1 and V.3, we explain how in some cases, it can make sense to examine the case $l < 0$. Section V.1 explains how our analysis differs in this case. At this stage, we only offer a simple model of the owners of these assets: they are completely passive and supply them inelastically: l is just an exogenous supply and the focus is entirely on entrepreneurs. One possible microfoundation is that at each date t , one-period-lived date- t consumers are endowed with trees paying a dividend equal to l at date $t + 1$. These consumers live only in period t , and need to consume at that date. We will encounter in Section V.3 other microfoundations for outside liquidity in which l may respond to the interest rate; as we will see, the theory extends to such situations.

Liquidity can also come in the form of a rational bubble. The bubble is an asset in unit supply that pays no dividend. We denote by $b_t \geq 0$ the value of the bubble at date t .

In the basic model, all these forms of liquidity—securities issues by middle-aged entrepreneurs, trees, and the bubble—are riskless assets. No arbitrage requires all these assets to have the same rate of return $1 + r_{t+1}$ between dates t and $t + 1$.

The problem of entrepreneurs. Entrepreneurs invest all their wealth in their youth

⁹That the entrepreneurs are net savers when young follows Woodford (1990). The results however only hinge on their having a demand for liquidity available in their middle age.

in assets—trees, the bubble, and investment projects of the previous generation—and use these savings when middle-aged as internal funds for their investment project. In their youth, entrepreneurs of generation t must decide how much to spend \hat{l}_t , on trees, how much \hat{b}_t of the bubble to acquire and how much \hat{x}_t to invest in securities issued by entrepreneurs of generation $t - 1$:

$$A = \hat{l}_t + \hat{b}_t + \hat{x}_t.$$

At date $t + 1$, the date- t entrepreneurs' investment capacity is the sum of the value of claims on the future cash flows from their investment $\rho_0 i_{t+1}/(1 + r_{t+2})$, and the date $t + 1$ value of its portfolio of trees \hat{l}_t , bubbles \hat{b}_t , and securities \hat{x}_t issued by the previous generation of entrepreneurs.¹⁰ All these assets to have the same return $1 + r_{t+1}$. Hence

$$i_{t+1} = \frac{\rho_0 i_{t+1}}{1 + r_{t+2}} + (1 + r_{t+1})[\hat{l}_t + \hat{b}_t + \hat{x}_t] \quad \text{or} \quad i_{t+1} = \frac{(1 + r_{t+1})[\hat{l}_t + \hat{b}_t + \hat{x}_t]}{1 - \frac{\rho_0}{1 + r_{t+2}}}.$$

As is standard from the corporate finance literature, investment i_{t+1} increases with the entrepreneurs' *net worth* $(1 + r_{t+1})[\hat{l}_t + \hat{b}_t + \hat{x}_t]$ at the time when the investment is made. The *investment multiplier* $1/[1 - \rho_0/(1 + r_{t+2})]$ is a measure of *leverage*. It increases with the fraction of income that is pledgeable to investors ρ_0 , and decreases with the interest rate $1 + r_{t+2}$ through the decrease in the value of the collateral generated by the project.

Discussion. We have adopted a framework with overlapping generations of entrepreneurs. The concept of generation should not be interpreted too literally—a period in our model need not last for 25 years. Rather, overlapping generations are the simplest modelling device that allows us to capture two features that are essential to our analysis. First, at any point in time, some entrepreneurs are net suppliers of liquidity while others are net demanders of liquidity. Second, interest rates can be lower than the rate of growth of the economy (here, zero), which makes room for rational bubbles.

Other modelling options would have delivered these same features. For example we could have analyzed a model à la Woodford (1990) where entrepreneurs are segmented into groups with alternating investment opportunities and borrowing constraints. Or we could have opted for a model à la Aiyagari (1994), Bewley (1986) and Hirano-Yanagawa (2010) where the investment opportunities of entrepreneurs are stochastic, with idiosyncratic risk

¹⁰Total resources available for investment at date $t + 1$ to a date- t entrepreneur come from two sources. First, he collects resources $\rho_0 i_{t+1}/(1 + r_{t+2})$ by selling securities that grant a right to a payoff $\rho_0 i_{t+1}$ in period $t + 2$. This transaction is equivalent to a fully collateralized loan. In addition, he liquidates its portfolio for a value $(1 + r_{t+1})[\hat{l}_t + \hat{b}_t + \hat{x}_t]$.

(and possibly aggregate risk as well). Under both types of models, occasionally binding borrowing constraints segment the horizons of agents with essentially the same effects as overlapping generations.

The potential benefit of Aiyagari-Bewley models over ours is that they are in principle more suitable for realistic quantitative explorations. However, the parameters for a realistic calibration in the context of our model (i.e. a precautionary savings model for firms instead of the more customary income fluctuation problem for consumers) are currently largely unknown. Moreover, this benefit has to be weighted against the cost in terms of loss of tractability. Indeed, the dynamics of such models can be hard to characterize theoretically because of the need to keep track of the evolving cross-sectional distribution of wealth. By contrast, we are able to derive the solution of our model in closed form. Since our objective is mostly theoretical, we view our model as preferable.

II.2 Competitive equilibrium

A competitive equilibrium imposes market clearing: $\hat{l}_t = l/(1 + r_{t+1})$, $\hat{b}_t = b_t$ and $\hat{x}_t = \rho_0 i_t/(1 + r_{t+1})$. We will use a version of recursive equilibrium as our running definition. The economy is amenable to a recursive representation with two state variables: past investment i_{t-1} and the bubble b_t . The laws of motion for these variables can be derived from three simple equations: a bubble dynamics equation, an asset supply equation and an asset demand equation.

Bubble dynamics. The absence of arbitrage implies that the bubble must grow at the rate of interest:

$$b_{t+1} = (1 + r_{t+1})b_t \tag{1}$$

Asset supply. The supply equation describes how generation $(t - 1)$'s investment at date t is constrained by the available liquidity, $l + b_t + \rho_0 i_{t-1}$, and by the investment-related pledgeable income, $\rho_0 i_t/(1 + r_{t+1})$:

$$i_t = \frac{\rho_0 i_t}{1 + r_{t+1}} + [l + b_t + \rho_0 i_{t-1}]$$

and can be expressed as

$$i_t = \frac{l + b_t + \rho_0 i_{t-1}}{1 - \frac{\rho_0}{1+r_{t+1}}}. \quad (2)$$

Asset demand. The demand equation says that generation t 's wealth goes into buying outside liquidity (l), the bubble, and the assets generated by the previous generation's investment ($\rho_0 i_t$):

$$A = \frac{l}{1 + r_{t+1}} + b_t + \frac{\rho_0 i_t}{1 + r_{t+1}}.$$

It can be expressed as

$$i_t = \frac{A(1 + r_{t+1}) - l - b_t(1 + r_{t+1})}{\rho_0}. \quad (3)$$

We define a competitive equilibrium as a sequence of investment levels, bubble and interest rates $\{i_t, b_t, r_t\}$ such that at every date t , the asset market clears. We need to specify the following initial conditions: the investment level i_{-1} of generation -1 maturing at date 0; and the value b_0 of the bubble at date 0.

Definition 1 *A competitive equilibrium is a sequence $\{i_t, b_t, r_t\}_{t \geq 0}$ together with an initial investment level $i_{-1} > 0$ and an initial bubble b_0 such that: (i) the bubble condition (1), the asset supply and asset demand equations (2) and (3) hold; and (ii) for all $t \geq 0$, $i_t \geq 0$, $b_t \geq 0$, and $\rho_1 > 1 + r_t \geq \rho_0$.*

Note that in a competitive equilibrium, we necessarily have $1 + r_t > \rho_0$ for all t , otherwise middle-aged entrepreneurs would invest at an infinite scale, which is impossible because the resources available for investment are bounded.

II.3 The bubble-free case

Let us first assume that $b_0 = 0$. This implies that $b_t = 0$ for all t . The economy is a one-dimensional dynamic system with state variable i_{t-1} . Given i_{t-1} , we now explain how i_t can be computed using equations (2) and (3) with $b_t = 0$. Detailed derivations can be found in Appendix A1.

Dynamics. The asset supply equation (2) determines i_t as a decreasing function of r_{t+1} . and the asset demand equation (3) determines i_t as an increasing function of r_{t+1} . As $1 + r_{t+1}$ increases from ρ_0 to $+\infty$, the supply curve decreases from $+\infty$ to $(l + \rho_0 i_{t-1})$

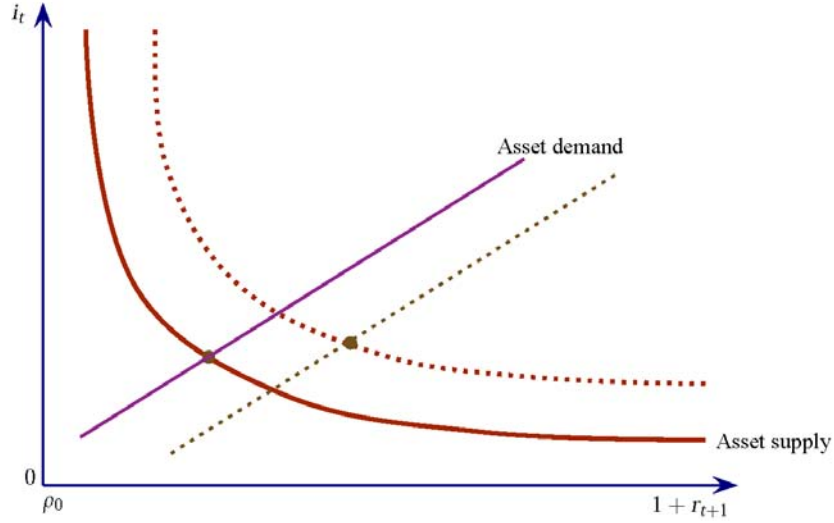


Figure 1: asset supply and asset demand curves. The dotted curves represent the effects of an increase in l (Section 2) or b_t (Section 3).

and the demand curve increases from $(A - l/\rho_0)$ to $+\infty$. The unique intersection of these supply and demand curves with $(1 + r_{t+1}) \in (\rho_0, +\infty)$ determines the values of $i_t > 0$ and $1 + r_{t+1} > \rho_0$.¹¹ We denote by $i_t = \Phi^i(i_{t-1}, 0)$, $r_{t+1} = \Phi^r(i_{t-1}, 0)$ the corresponding policy functions. The argument "0" in $\Phi^i(i_{t-1}, 0)$ and $\Phi^r(i_{t-1}, 0)$ indicates that we have imposed $b_t = 0$. In Appendix A1, we derive closed-form expressions for $\Phi^i(i_{t-1}, 0)$ and $\Phi^r(i_{t-1}, 0)$.

Inside and outside liquidity. The productive sector provides its own liquidity in a dynamic fashion: an increase in i_{t-1} leads to an increase in i_t . Indeed, an increase in i_{t-1} leads to an upward shift in the asset supply curve (2) and does not affect the asset demand curve (3). The result is an increase in investment i_t and an increase in the interest rate $1 + r_{t+1}$.

The asset supply and asset demand equations (2) and (3) can also be used to determine the impact of outside liquidity (l) on investment i_t for a given i_{t-1} . Given i_{t-1} , increasing outside liquidity l available at date t shifts the asset supply curve (2) upwards and the asset demand curve (3) downwards. The interest rate r_{t+1} unambiguously increases. The effect on investment i_t is ambiguous. Indeed, using the asset supply equation $i_t = (l + \rho_0 i_{t-1}) / [1 - \rho_0 / (1 + r_{t+1})]$, the impact of the increase in outside liquidity on investment can be decomposed into two effects. On the one hand, increasing outside liquidity l available

¹¹This derivation assumes that ρ_1 is large enough so that $\rho_1 > 1 + r_{t+1}$. As stated above, we focus on equilibria which verify this property.

at date t increases the net worth $l + b_t + \rho_0 i_{t-1}$ of middle-aged entrepreneurs at date t —a *liquidity effect*. On the other hand, and as noted above, increasing outside liquidity increases the interest rate r_{t+1} . As a result leverage $1/[1 - \rho_0/(1 + r_{t+1})]$ decreases, which just expresses the fact that financing is harder when interest rates are high. This we call the *leverage effect*. The resulting effect on investment i_t at date t is ambiguous.

Intuitively, firms demand liquidity which is akin to an input in production. This tends to make investment and outside liquidity complements. But investments made by the private sector also play the role of inside liquidity. Inside liquidity is in direct competition with outside liquidity. This tends to make investment and outside liquidity substitutes. This distinction between the liquidity effect and the leverage effect also has a temporal dimension. Existing liquidity—inside liquidity i_{t-1} or outside liquidity l —and contemporaneous investment i_t are complements. Future outside liquidity and contemporaneous investment i_t are substitutes.

Steady state. To solve for a steady state (i^*, r^*) of the bubble-free economy, we look for a solution to the system of equations obtained by imposing $i_t = i_{t-1} = i^*$ and $r_{t+1} = r^*$ in the asset supply and asset demand equations (2) and (3):

$$i^* = \frac{l + \rho_0 i^*}{1 - \frac{\rho_0}{1+r^*}} \quad \text{and} \quad i^* = \frac{A(1 + r^*) - l}{\rho_0}. \quad (4)$$

There is a unique solution with $i^* \geq 0$ and $1 + r^* \geq \rho_0$. In appendix A1, we provide a closed-form solution for i^* and r^* . The following proposition establishes that this steady state is stable and summarizes the dynamics of the bubble-free economy.¹²

Proposition 1 *Let $\{i_t, r_t\}_{t \geq 0}$ be a competitive equilibrium of the bubble-free economy. The economy converges to the bubble-free steady state. Moreover this convergence is monotonic: investment i_t converges monotonically to i^* .*

We can clarify the circumstances under which outside liquidity and investment are complements or substitutes. The equations in (4) can be rearranged to yield

$$i^* = \frac{A(1 + r^*)}{1 - \frac{\rho_0}{1+r^*}}. \quad (5)$$

¹²When $l > 0$ (this is also true of the case $l < 0$ analyzed in Section V.1), this is the unique solution of the system of equations in (4) with positive investment $i^* \geq 0$. When $l = 0$, there is another solution of the system of equations in (4) with positive investment: $i^* = 0$ and $1 + r^* = 0$. However, this is not a competitive equilibrium, since a necessary condition is $1 + r^* > \rho_0$.

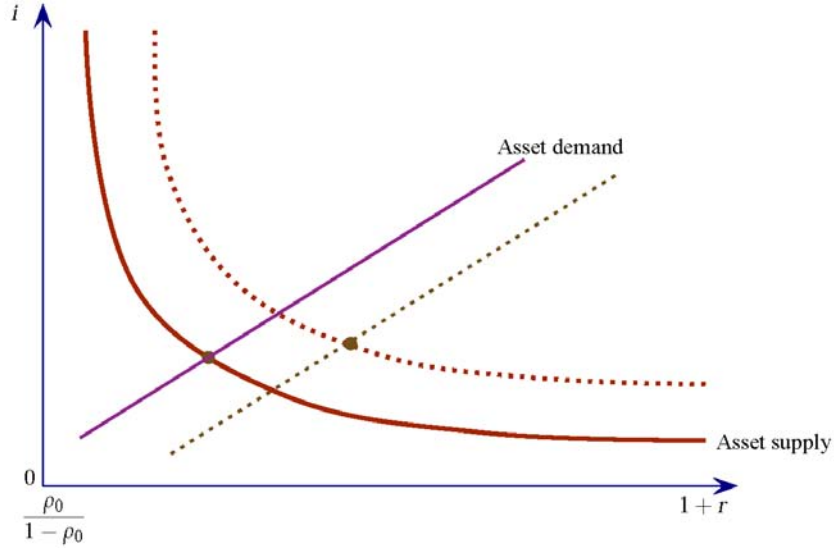


Figure 2: asset supply and asset demand curves in steady state. The dotted curves represent the effects of an increase in l (Section 2) or a shift from $b^* = 0$ to $b^{**} > 0$ (Section 3).

It can be verified that i^* increases with r^* if and only if the following condition holds:

$$\frac{1}{2} \geq \frac{\rho_0}{1+r^*}. \quad (6)$$

In Appendix A1, we verify that r^* increases with l . Hence i^* increases with l if and only if i^* increases with r^* in (5), i.e. if and only if condition (6) holds. Given that r^* is an increasing function of outside liquidity l , this condition will hold if l is large enough. Let l_0 be the corresponding threshold. Clearly $l_0 > 0$ if and only if condition (6) is violated when $l = 0$ (in which case $1+r^* = \rho_0/(1-\rho_0)$), i.e. if and only if $1/2 < \rho_0$.

Proposition 2 *In the bubble-free economy, steady state interest rate r^* increases with outside liquidity. Steady state investment i^* increases with outside liquidity l when the interest rate is high enough so that (6) is verified. More precisely, there exists $l_0 \geq 0$ such that for all $l \geq 0$, $\frac{\partial i^*}{\partial l}$ is positive if and only if l is greater (smaller) than l_0 . Moreover we have $l_0 > 0$ if and only if $\rho_0 < 1/2$.*

This proposition characterizes the situations where inside liquidity (investment) and outside liquidity (trees) are complements or substitutes. When liquidity is abundant (l high), the price of liquidity is low (the interest rate r^* is high) and the liquidity effect outweighs the leverage effect so that investment i^* increases with l . An intuition for this result is that an increase in the interest rate r^* has a constant positive marginal effect on net worth

at the time of investment $A(1 + r^*)$ but a decreasing negative marginal effect on leverage $1/[1 - \rho_0/(1 + r^*)]$.

The case $l = 0$. The case $l = 0$ proves to be an important benchmark to understand the effects of bubbles. For this reason, we find it useful to highlight its properties even in the bubble-free case. The bubble-free steady state is then $i^* = A/(1 - \rho_0)$ and $1 + r^* = \rho_0/(1 - \rho_0)$. In Appendix A1, we show that whenever $l > 0$, the steady state interest rate is higher so that $1 + r^* > \rho_0/(1 - \rho_0)$.

III Bubbles

In this section, we consider the possibility of rational bubbles. We first start by eliciting the dynamics of the economy and the conditions for the existence of a bubbly steady state in Section III.1. We show that there exists either zero or one bubbly steady state. This steady state features higher investment than the bubble-free steady state. There are multiple competitive equilibria corresponding to the same initial investment level i_{-1} . For any initial investment level i_{-1} , we show that there exists a maximum feasible initial bubble $\bar{b}(i_{-1})$. For $b_0 < \bar{b}(i_{-1})$, the economy converges to the bubble-free steady state. For $b_0 = \bar{b}(i_{-1})$, the economy converges to the bubbly steady state. Detailed derivations can be found in Appendix A2.

III.1 Bubbly dynamics and steady state

In this section we focus on the case where $l > 0$. We return to the case $l = 0$ at the end of the section.

Dynamics. The economy is a two-dimensional dynamic system with state variables i_{t-1} and b_t . Given i_{t-1} and b_t , we now explain how i_t and b_{t+1} can be computed.

As can be seen from equation (3), a necessary condition for equilibrium is then that $b_t < A$. The asset supply equation (2) determines i_t as a decreasing function of r_{t+1} , and the asset demand equation (3) determines i_t as an increasing function of r_{t+1} . As $1 + r_{t+1}$ increases from ρ_0 to $+\infty$, the supply curve decreases from $+\infty$ to $(l + b_t + \rho_0 i_{t-1})$ and the demand curve increases from $(A - b_t - l/\rho_0)$ to $+\infty$. The unique intersection of these supply and demand curves with $(1 + r_{t+1}) \in (\rho_0, +\infty)$ determines the values of i_t and r_{t+1} . See Figure 1 for a graphical illustration.

We can then infer the value of b_{t+1} from (1).¹³ We denote by $i_t = \Phi^i(i_{t-1}, b_t)$, $r_{t+1} = \Phi^r(i_{t-1}, b_t)$ and $b_{t+1} = \Phi^b(i_{t-1}, b_t)$ the corresponding policy functions. In Appendix A2, we derive closed-form expressions for $\Phi^i(i_{t-1}, b_t)$, $\Phi^r(i_{t-1}, b_t)$ and $\Phi^b(i_{t-1}, b_t)$.

Bubbly steady state. There exists either zero or a unique bubbly steady state. When a bubbly steady state exists, the values of i^{**} , b^{**} and r^{**} can be found by imposing $i_t = i_{t-1} = i^{**}$, $b_t = b^{**}$ and $r_{t+1} = r^{**} = 0$ in equations (2) and (3). See Figure 2 for a graphical illustration. We then have:

When it exists the bubbly steady state is given by

$$i^{**} = \frac{A}{1 - \rho_0}, \quad b^{**} = A \frac{1 - 2\rho_0}{1 - \rho_0} - l \quad \text{and} \quad r^{**} = 0.$$

The condition of existence of a bubbly steady state is

$$\frac{1 - 2\rho_0}{1 - \rho_0} > \frac{l}{A}. \quad (\text{B})$$

Condition (B) shows that bubbles can emerge when inside (ρ_0) and outside (l) liquidity is scarce, creating a high demand for assets. Moreover the size of the bubble b^{**} in the bubbly steady state decreases with the fraction ρ_0 of income that is pledgeable and with outside liquidity l : variations in l are compensated one for one by variations in the size of the bubble. The interest rate r^{**} is pinned down at 0. As a result, investment i^{**} at the bubbly steady state does not depend on l .

In Section III.2 below, we show that condition (B) is equivalent to the standard condition that the interest rate in the bubble-free steady state (r^*) be less than the rate of growth of the economy (0). There, we also analyze the connection between dynamic efficiency and the condition for the existence of bubbles.

Phase diagram analysis. It will prove convenient to describe the dynamics that we have just derived using a phase diagram. This requires characterizing the $i_t = i_{t-1}$ schedule—the set of values (i_{t-1}, b_t) such that $\Phi^i(i_{t-1}, b_t) = i_{t-1}$ —and the $b_{t+1} = b_t$ schedule—the set of values (i_{t-1}, b_t) such that $\Phi^b(i_{t-1}, b_t) = b_t$.¹⁴

¹³This derivation assumes that ρ_1 is large enough so that $\rho_1 > 1 + r_{t+1}$. As stated above, we focus on equilibria which verify this property.

¹⁴Note that $b_{t+1} = b_t = 0$ whenever $b_t = 0$. Literally speaking the $b_{t+1} = b_t$ schedule consists of two parts: the one characterized by $b_t^b(i_{t-1})$ which applies whenever $b_t > 0$, and the line $b_t = 0$; abusing terminology, we refer to the former as the $b_{t+1} = b_t$ schedule.

The $i_t = i_{t-1}$ schedule is given by

$$b_t = i_{t-1}^2 \frac{\rho_0(1-\rho_0)}{l} - \rho_0 i_{t-1} \frac{A+l - \left(\frac{1}{\rho_0}\right)l}{l} - l$$

which defines a function $b^i(i_{t-1})$. The $b_{t+1} = b_t$ schedule is given by

$$b_t = -\rho_0^2 i_{t-1} + (1-\rho_0)(A-l) - \rho_0 l$$

which defines a function $b^b(i_{t-1})$.

Lemma 1 *Suppose that $l > 0$. The interest rate $r_{t+1} = \Phi^r(i_{t-1}, b_t)$ and investment $i_t = \Phi^i(i_{t-1}, b_t)$ are increasing in i_{t-1} and b_t . Investment $i_t = \Phi^i(i_{t-1}, b_t)$ is greater (smaller) than i_{t-1} if and only if b_t is greater (smaller) than $b^i(i_{t-1})$. The bubble $b_t = \Phi^b(i_{t-1}, b_t)$ is greater (smaller) than b_{t-1} if and only if b_t is greater (smaller) than $b^b(i_{t-1})$.*

The intuition for this lemma is simple: the presence of the bubble lowers the price of outside liquidity, or in other words, increases the interest rate. This increases corporate net worth and investment, to the detriment of the suppliers of outside liquidity.

Figure 3 is a phase diagram representing the dynamics of the economy.¹⁵ The bubbly steady state always features more investment than the bubble-free steady state. The latter is stable while the former features a downward-sloping saddle path. If the economy starts on the saddle path, it will eventually converge to the bubbly steady state. If it starts below the saddle path, it will eventually converge to the bubble-free steady state. The economy cannot start above the saddle path without eventually violating the constraint $b_t < A$, which is a necessary condition for a competitive equilibrium.

Proposition 3 *Assume that (B) holds and that $l > 0$. Then $r^* < 0$ and $i^{**} > i^*$. For any i_{-1} , there exists a maximum feasible bubble $\bar{b}(i_{-1})$. The path of productions/investments $\{i_t\}_{t \geq 0}$ and interest rates $\{r_t\}_{t \geq 0}$ are increasing in the size of the original bubble b_0 . For $b_0 < \bar{b}(i_{-1})$, the economy is asymptotically bubble-free: it converges to the bubble-free steady state. For $b_0 = \bar{b}(i_{-1})$, the economy is asymptotically bubbly: it converges to the bubbly steady state. Moreover, the function $\bar{b}(i_{-1})$ is decreasing in i_{-1} .*

¹⁵We have $b^i(0) = -l < 0$ and $b^b(0) = (1-\rho_0)(A-l) - \rho_0 l$ which is strictly positive as long as (B) holds. It is easy to verify that b^i is increasing when it intersects b^b . The sign of $\frac{db^i}{di_{t-1}}|_{i_{t-1}=0}$ on the other hand, is unclear a priori.

We are now in position to describe the dynamics when a bubble *unexpectedly* bursts. We have in mind the following experiment. For $t < t_0$, the economy evolves as a competitive equilibrium $\{\tilde{i}_t, \tilde{b}_t, \tilde{r}_t\}_{t \geq 0}$ with $\tilde{b}_t > 0$ for all t . Then at $t = t_0$ an unforeseen (zero-probability) event materializes which changes the conditions in the economy: for $t \geq t_0$ the economy evolves according to the competitive equilibrium with initial conditions $i_{t_0-1} = \tilde{i}_{t_0-1}$ and $b_{t_0} = 0$. In Section IV.2, we set up a sunspot model. The realization of the sunspot triggers a bubble crash. We construct a rational expectations equilibrium which takes into account that the bubble has a non-zero probability of crashing. The unexpected bubble burst that we consider here can be thought of as a limit of the sunspot model when the probability that the sunspot variable materializes goes to zero.

Suppose for example that we are initially in the bubbly steady state $\tilde{i}_t = i^{**}$, $\tilde{b}_t = b^{**}$ and $\tilde{r}_t = r^{**} = 0$. When the bubble crashes at $t = t_0$, the economy jumps downwards to the $b_t = 0$ line. Investment collapses, the interest rate decreases and the economy gradually converges to the bubble-free steady state.

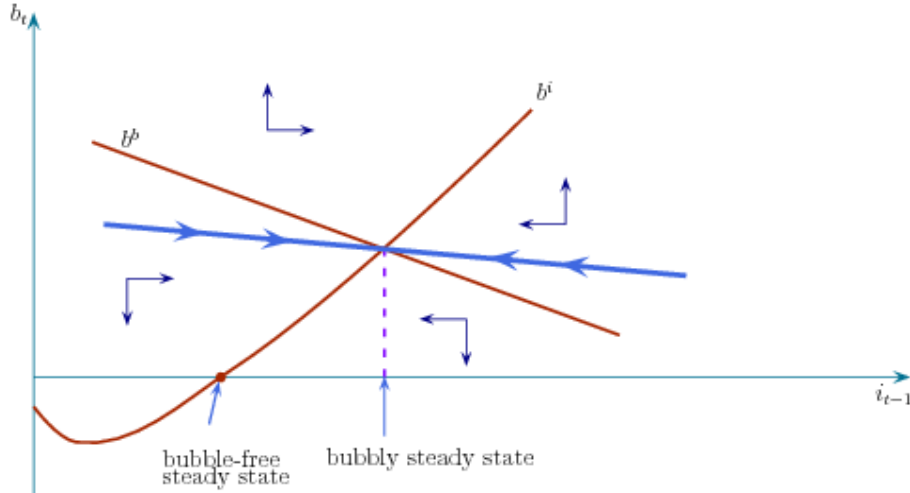


Figure 3: phase diagram with positive outside liquidity.

The case $l = 0$. This analysis carries through to the case where $l = 0$. The only difference is that the $i_t = i_{t-1}$ schedule becomes vertical at i^* . Investment dynamics are unaffected by the existence of a bubble:

$$i_t = A + \rho_0 i_{t-1}.$$

The reason is that the sum of the value of the securities issued by the middle-aged generation, $\rho_0 i_t / (1 + r_{t+1})$, and the bubble b_t in the end is equal to the savings A of the young generation.

Put differently, the bubble fully crowds out the value of the assets produced by previous generations of entrepreneurs. Its only effect is to increase the rate of interest, as

$$b_t + \frac{\rho_0 \dot{i}_t}{1 + r_{t+1}} = A.$$

Similarly the bubbly steady state (if it exists) features the same investment level as the bubble-free steady state $i^{**} = i^* = A/(1 - \rho_0)$. At a steady state, the bubble simply increases the interest rate.¹⁶

III.2 Tests for bubbles and dynamic efficiency

In this section, we explain how dynamic efficiency, interest rates and the possibility of bubbles are related. Most of the results below are not new in substance. Indeed, similar results are discussed in Woodford (1990). Nevertheless, we find it useful to extend these insights to our setup; this exercise further allows us to revisit the question of the measurement of dynamic efficiency and the possibility of bubbles.

In standard models of rational bubbles (e.g. Tirole 1985), bubbles can only arise if the bubble-free economy is dynamically inefficient. Abel *et al* (1989) use this observation to devise a test for the existence of bubbles by testing for dynamic efficiency. This test of dynamic efficiency involves comparing the value of resources used for investment every period to the value of resources produced. Applying their test to the data, they conclude that the US economy is dynamically efficient and hence rule out the possibility of bubbles.

Santos and Woodford (1997) show that the connection between bubbles and interest rates is very general: for a large variety of economic environments, a necessary condition for bubbles on positive net-supply assets to occur is that the net present value of the endowment be infinite. Santos and Woodford's condition for bubbles applies in our economy: in steady states, bubbles can occur if and only if the interest rate is below the rate of growth of the economy (0)—a condition equivalent to the net present value of the endowment being infinite.

The connection between this condition and dynamic inefficiency is lost: bubbles can occur whether or not the economy is dynamically inefficient, and the condition that the interest

¹⁶Woodford (1990) shows that the introduction of bubbles always crowds investment in, starting in a situation where there are neither outside stores of value ($l = 0$) nor inside stores of value ($\rho_0 = 0$). Because $\rho_0 = 0$, his model assumes away leverage effects. As we show here, with $\rho_0 > 0$ bubbles have no effect on investment if $l = 0$. There is a discontinuity at $\rho_0 = 0$. See Appendix A3 for a detailed discussion.

rate is below the rate of growth of the economy is consistent with dynamic efficiency. As a result, interest rate tests are inadequate to gauge dynamic efficiency, but appropriate to detect if bubbles are possible. Similarly, Abel *et al* (1989)'s test remains valid in our model as a test of dynamic efficiency, but it does not directly address the possibility of bubbles: Dynamic inefficiency is a sufficient but not necessary condition for the possibility of bubbles.

Dynamic efficiency. To discuss efficiency, we first need a metric to index the welfare of the original holders of trees in every period. We take the utility of the original holders of date- t trees to be (any increasing function of) the amount of resources that they receive from selling their trees. This is the right concept in the example we gave for the supply of outside liquidity with one-period-lived consumers in Section II.

In our model, dynamic efficiency and Pareto efficiency are equivalent concepts and we therefore use the two terms interchangeably in what follows. An allocation is dynamically efficient if there is no other resource-feasible allocation that increases the lifetime utility of some agent without reducing that of another. Note that in this definition, the pledgeability constraints are deliberately ignored.

If an allocation is not dynamically efficient, we can ask whether it satisfies a weaker notion of efficiency which we refer to as constrained dynamic efficiency: an allocation is constrained dynamically efficient if there is no other resource-feasible allocation that increases the lifetime utility of some agent without reducing that of another, and which satisfies the pledgeability constraints that require that the consumption of old entrepreneurs at date t exceed $(\rho_1 - \rho_0)$ times the amount of resources that were invested at date $t - 1$. Actually, we will show that competitive equilibria of our economy, when they are not dynamically efficient, are also not constrained dynamically efficient.

Determining whether an allocation is dynamically efficient is a simple task: when the pledgeability constraints are ignored, our economy is a simple overlapping generations economy with a linear investment technology with rate of return ρ_1 . The following proposition demonstrates that the efficiency of the allocations that satisfy Definition 1 of a competitive equilibrium (and this definition does incorporate pledgeability constraints) hinges on the value ρ_1 .

Proposition 4 *If $\rho_1 > 1$, all competitive equilibria of our economy are dynamically efficient. If $\rho_1 < 1$, no competitive equilibrium is dynamically efficient, and furthermore, no competitive equilibrium is constrained dynamically efficient.*

In our model, when the (social) rate of return on investment ρ_1 is greater than the gross rate of growth of the economy (1), competitive equilibria are always dynamically efficient. Note that this holds whether or not a bubble is present in the economy. In particular, this means that both the bubbly and the bubble-free steady state are dynamically efficient when $\rho_1 > 1$. When $\rho_1 < 1$, the bubbly and the bubble-free steady states are not only dynamically efficient but also constrained dynamically inefficient.

Note that dynamic inefficiency ($\rho_1 < 1$) implies that $r^* < 0$. However, $r^* < 0$ is compatible with dynamic efficiency ($\rho_1 > 1$). Interest rates below the growth rate of the economy are compatible with dynamic efficiency because the interest rate reflects the fraction of the return on investment which is pledgeable to outside investors and not the total return on investment. Indeed, the paths for investment and the interest rate do not depend on the total return on investment ρ_1 (as long as $\rho_1 > 1 + r_t$ for all t), but only on the pledgeable part of this return ρ_0 . In sum, $r^* < 0$ is a necessary but not sufficient condition for dynamic inefficiency.

Bubbles. In contrast, the possibility of bubbles—condition (B)—is still determined by the interest rate test $r^* \leq 0$.

Proposition 5 *The possibility of bubbles is exactly determined by an (uninformed investor) interest rate test of the form $r^* \leq 0$.*

At the bubbly steady-state, the interest rate r^{**} is equal to 0. Therefore, at a steady state, one can test for the possibility of bubbles by comparing the interest rate with the rate of growth of the economy, without taking a view as to whether or not the economy is at the bubble-free or the bubbly steady state.

The validity of Abel *et al* (1989)'s test to detect dynamic efficiency is most easily illustrated by applying it to steady states. Indeed, consider a (bubbly or bubble-free) steady state $(i, b) \in \{(i^*, 0), (i^{**}, b^{**})\}$. The test involves three quantities: the value of resources $\rho_1 i$ produced in every period, the resources i used for investment, and the value of the market portfolio $\rho_0 i$. It states that the economy is dynamically efficient (inefficient) if and only if the difference between the resources produced and the resources used of investment normalized by the value of the market portfolio $(\rho_1 i - i) / (\rho_0 i)$ is strictly positive (negative), i.e. if and only if ρ_1 is greater (smaller) than one, exactly as prescribed by Proposition 4.

The considerations brought about by our analysis go part of the way towards rehabilitating interest rate tests as an indication for the possibility of bubbles. They shed light on

which interest rate to use in these tests: this rate corresponds to an interest rate available to outside investors—a relatively low interest rate, such as the interest rate on riskless bonds.

III.3 Summary

Figure 4 allows for a concise summary of the dependence on outside liquidity l of the bubbly steady and the bubble-free steady states. The figure displays investment i^* at the bubble-free steady state as a function of outside liquidity l . We denote this function by $i^*(l)$. We also use the notation $r^*(l)$ to denote the interest rate in the bubble-free steady state. The figure also represents investment at the bubble-free steady state when $l < 0$. This case will be covered later in Section V.1. For now, we focus on the part of the figure that corresponds to $l \geq 0$.

The function $i^*(l)$ reaches a minimum on $[0, +\infty)$ at the threshold $l_0 \geq 0$. In Proposition 2, we showed that $l_0 > 0$ if and only if $\rho_0 < 1/2$. The left panel illustrates the case where $\rho_0 < 1/2$ (and hence $l_0 > 0$) and the right panel illustrates the case where $\rho_0 > 1/2$ (and hence $l_0 = 0$).

When $\rho_0 > 1/2$, liquidity always crowds investment in: $i^*(l)$ is increasing in l for all $l \geq 0$. For all values $l \geq 0$, condition (B) is violated, and hence bubbles cannot arise.

In the rest of this section, we assume that $\rho_0 < 1/2$, liquidity crowds investment in (out) if and only if $l \geq l_0$ ($l < l_0$): $i^*(l)$ decreases in l on $[0, l_0]$ and increases in l on $[l_0, \infty)$. There is always a value $l^{**} \equiv A(1 - 2\rho_0) / (1 - \rho_0) > 0$ such that $i^*(l^{**}) = i^*(0)$.

Condition (B) holds, and hence bubbles can arise, if and only if $0 \leq l \leq l^{**}$. At the bubbly steady state, variations in l are compensated one for one by variations in the size of the bubble since $b^{**} = A(1 - 2\rho_0) / (1 - \rho_0) - l$. As a result, investment $i^{**} = A / (1 - \rho_0)$ at the bubbly steady state does not depend on l . Importantly, investment at the bubbly steady state is always equal to investment at the bubble-free steady state when $l = 0$: $i^{**} = i^*(0)$.

When $l = l^{**}$ investment is at the same level in the bubble-free and bubbly steady states: $i^*(l^{**}) = i^{**} = i(0)$. Moreover, the gross interest rate is equal to zero in the bubble-free steady state $1 + r^*(l^{**}) = 0$, and the value of the bubble in the bubbly steady state is $b^{**} = 0$. For $0 < l < l^{**}$, investment is strictly higher in the bubbly steady state than in the bubble-free steady state $i^{**} = i^*(0) > i^*(l)$. For $0 \leq l < l^{**}$, the gross interest rate at the bubble-free steady state is strictly negative $1 + r^*(l) < 0$ and the size of the bubble at the bubbly steady state is given by $b^{**} = l^{**} - l > 0$.

All in all, bubbles, when they are possible, always restore investment to the steady state level corresponding to both $l = 0$ and $l = l^{**}$: $i^{**} = i^*(0) = i^*(l^{**})$. When bubbles are possible, investment at the bubble-free steady state $i^*(l)$ initially decreases as outside liquidity increases from $l = 0$ to $l = l_0$. Investment at the bubble-free steady state $i^*(l)$ then increases as outside liquidity increases from $l = l_0$ to l^{**} and reaches $i^*(l^{**}) = i(0)$. For all $0 < l < l^{**}$ we have $i^*(l) < i^{**} = i(0) = i(l^{**})$. For $l > l^{**}$, bubbles cease to be possible.

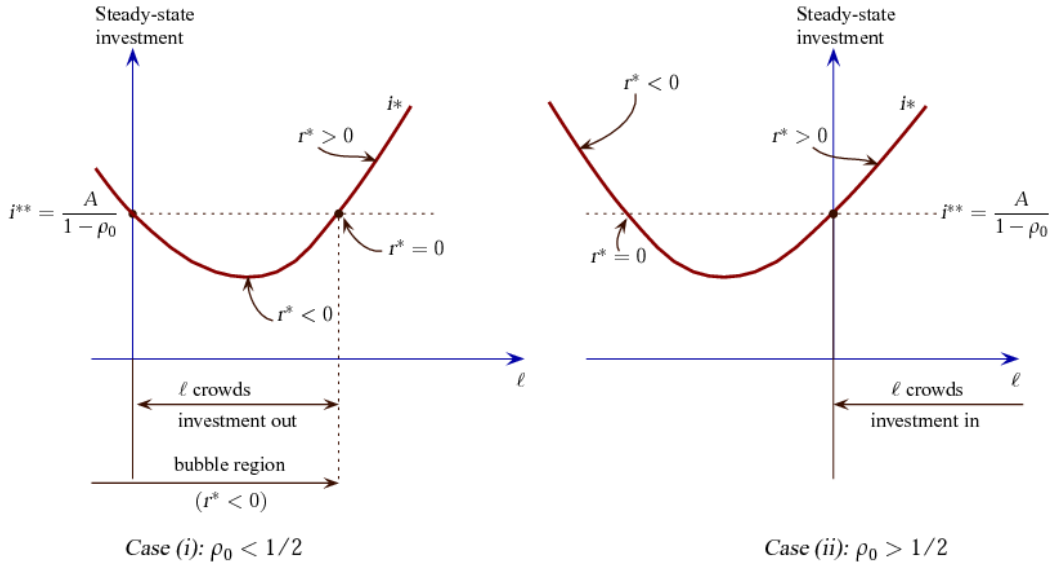


Figure 4: Comparing (i^{**}, r^{**}) and (i^*, r^*) .

IV Economic implications

IV.1 Collateral heterogeneity

We have assumed so far for simplicity that firms are homogenous (perhaps up to a scaling factor). When firms differ, say, in the pledgeability of their income, those with limited access to unsophisticated investors, i.e., low ρ_0 firms (family firms, private equity, startups), benefit relatively more from the presence of a bubble. They enjoy the liquidity effect without being much impacted by the leverage effect as they do not resort much to small investors' money. Conversely, they also suffer more from a bubble crash.

Let k be an index for firms and let ρ_0^k be an increasing function of k . We can assume without loss of generality that k is distributed uniformly on $[0, 1]$. We denote by i_t^k the investment of firm k in period t : each firm's investment is potentially different since they differ in their ability to generate pledgeable income $\rho_0^k i_t^k$ from investment.

We then have the following aggregation result. The economy is described by two state variables: the value of the bubble b_t and the integral $\int \rho_0^k i_{t-1}^k dk$ describing the total value of the existing stock of securities. The law of motion for b_t is still $b_{t+1} = b_t(1 + r_{t+1})$, while $\int \rho_0^k i_{t-1}^k dk$ and r_{t+1} are jointly determined as the intersection of the aggregate supply and the demand curves for assets:

$$\int \rho_0^k i_t^k dk = \left(\int \frac{\rho_0^k}{1 - \frac{\rho_0^k}{1+r_{t+1}}} dk \right) \left(b_t + l + \int \rho_0^k i_{t-1}^k dk \right) \quad (7)$$

and

$$\int \rho_0^k i_t^k dk = [A(1 + r_{t+1}) - l - (1 + r_{t+1})b_t]. \quad (8)$$

Investment by firm k can be computed as

$$i_t^k = \frac{b_t + l + \int \rho_0^k i_{t-1}^k dk}{1 - \frac{\rho_0^k}{1+r_{t+1}}}. \quad (9)$$

There exists either zero or a unique bubbly steady state. When a bubbly steady state exists, the values of $\int \rho_0^k i^{**k} dk$ and b^{**} can be found by imposing $\int \rho_0^k i_t^k dk = \int \rho_0^k i_{t-1}^k dk = \int \rho_0^k i^{**k} dk$, $b_t = b^{**}$ and $r_{t+1} = r^{**} = 0$ in equations (7) and (8). Investment by firm k can then be computed using equation (9). We then have:

$$i^{**k} = \frac{A}{1 - \rho_0^k}, \quad b^{**} = \left(\int \frac{1 - 2\rho_0^k}{1 - \rho_0^k} dk \right) A - l, \quad \text{and } r^{**} = 0.$$

The condition for a bubble to exist is now given by

$$\left(\int \frac{1 - 2\rho_0^k}{1 - \rho_0^k} dk \right) > \frac{l}{A}. \quad (\text{B}')$$

The analysis of the dynamics of the economy are exactly as in Section III.1. Replacing the representative firm's pledgeable income by the industry-average pledgeable income, we see that the previous analysis generalizes to heterogenous firms.

The relative size of firms with low pledgeable income increases when bubbles arise and decreases when bubbles crash:

$$\begin{aligned} \frac{di_t^k}{i_t^k db_t} &= \frac{\partial i_t^k}{i_t^k \partial b_t} + \frac{\partial i_t^k}{i_t^k \partial r_{t+1}} \frac{dr_{t+1}}{db_t} \\ &= \frac{1}{b_t + l + \int \rho_0^k i_{t-1}^k dk} - \frac{\rho_0^k}{(1 + r_{t+1} - \rho_0^k)^2} \frac{dr_{t+1}}{db_t} \end{aligned}$$

We can also analyze the consequences of an *unexpected* (zero probability) bubble crash of the form discussed in Section III.1. There are two immediate opposing effects on investment: (a) firms which used the bubble to hoard liquidity have less net worth (b) the interest rate decreases, which allows for more leverage. The percentage decrease in investment resulting from a lower net worth is independent of ρ_0^k . The percentage increase in investment from a higher leverage is higher, the higher is pledgeable income ρ_0^k . As a result, in relative terms, the size of firms with low pledgeable income compared to the size of firms with high pledgeable income decreases when a bubble crashes.

Proposition 6 *Assume that (B') holds and that $l > 0$. Then:*

(i) *for any value of $\int \rho_0^k i_{-1}^k dk$, there exists a maximum feasible bubble $\bar{b}(\int \rho_0^k i_{-1}^k dk)$. The path of interest rates $\{r_t\}_{t \geq 0}$ are increasing in the size of the initial bubble b_0 ; the path of productions/investments $\{i_t\}_{t \geq 0}$ is increasing in the size of the initial bubble b_0 when outside liquidity l is positive, and decreasing when outside liquidity l is negative. For $b_0 < \bar{b}(\int \rho_0^k i_{-1}^k dk)$, the economy is asymptotically bubble-free: it converges monotonically to the bubble-free steady state. For $b_0 = \bar{b}(\int \rho_0^k i_{-1}^k dk)$, the economy is asymptotically bubbly: it converges monotonically to the bubbly steady state;*

(ii) *the equilibrium paths for $\{b_t\}_{t \geq 0}$ and $\{r_t\}_{t \geq 0}$ are increasing in the size b_0 of the initial bubble;*

(iii) *the relative size of firms with low pledgeable income (low ρ_0^k) compared to the size of firms with high pledgeable income (high ρ_0^k) increases with the size of the initial bubble b_0 : the relative variation $(i_t^k)^{-1} di_t^k / db_0$ of investment i_t^k at date $t + 1$ with respect to the initial bubble b_0 is decreasing in k .*

IV.2 Stochastic bubbles (1): bubbly liquidity premium

As in Weil (1987), we can allow the bubble to burst stochastically depending on the realization of a sunspot. Suppose that each period the bubble bursts with probability $1 - \lambda$. An

asset's liquidity service depends on what the asset delivers when cash is particularly valuable to firms. Building on this idea, we now argue that, even in this risk neutral environment, a stochastic bubble trades at a liquidity discount or equivalently a risk premium relative to riskless stores of value. We focus on the case $l > 0$.

Let i_t and r_{t+1} (respectively, i_t^- and r_{t+1}^-) denote the investment levels and interest rates when the bubble has lasted until period $t + 1$ and continues (respectively, bursts). The asset supply equations are given by

$$i_t = \frac{b_t + l + \rho_0 i_{t-1}}{1 - \frac{\rho_0}{1+r_{t+1}}} \quad \text{and} \quad i_t^- = \frac{l + \rho_0 i_{t-1}}{1 - \frac{\rho_0}{1+r_{t+1}^-}}.$$

Similarly, the asset demand equations are given by

$$i_t = \frac{A(1 + r_{t+1}) - l - (1 + r_{t+1})b_t}{\rho_0} \quad \text{and} \quad i_t^- = \frac{A(1 + r_{t+1}^-) - l}{\rho_0}.$$

Since i_t^- and r_{t+1}^- are determined by the same set of equations as i_t and r_{t+1} but with $b_t = 0$, it is clear that $r_{t+1} > r_{t+1}^-$: the burst of the bubble depresses the interest rate. The immediate response of investment i_t to a bubble crash is determined by Lemmas 1 and 3: as long as $l > 0$, the burst of the bubble depresses investment so that $i_t > i_t^-$ ($i_t = i_t^-$ when $l = 0$).

At date t , generation- t entrepreneurs can hold safe assets (trees, claims on previous investments' income) or risky ones (stochastic bubble). Letting \tilde{r}_t denote the return on the bubble when it does not burst: $b_t = (1 + \tilde{r}_t)b_{t-1}$ if the bubble does not burst and $b_t = 0$ otherwise. By investing one in a tree at t , an entrepreneur can secure $1 + r_t$ at $t + 1$, which allows him to invest $(1 + r_t) / [1 - \rho_0 / (1 + r_{t+1})]$ at $t + 1$ if the bubble does not crash at $t + 1$ and $(1 + r_t) / [1 - \rho_0 / (1 + r_{t+1}^-)]$ if it crashes. This allows him to consume $(\rho_1 - \rho_0)(1 + r_t) / [1 - \rho_0 / (1 + r_{t+1})]$ at $t + 2$ if the bubble does not crash at $t + 1$ and $(\rho_1 - \rho_0)(1 + r_t) / [1 - \rho_0 / (1 + r_{t+1}^-)]$ if it crashes. Similarly, investing one in the bubble at t delivers $1 + \tilde{r}_t$ at $t + 1$ if the bubble does not crash at $t + 1$ and zero if it crashes. This allows the entrepreneur to invest $(1 + \tilde{r}_t) / [1 - \rho_0 / (1 + r_{t+1})]$ at $t + 1$ if the bubble does not crash at $t + 1$ and zero if it crashes. This allows him to consume $(\rho_1 - \rho_0)(1 + \tilde{r}_t) / [1 - \rho_0 / (1 + r_{t+1})]$ at $t + 2$ if the bubble does not crash at $t + 1$ and zero if it crashes. In equilibrium, expected consumption at $t + 2$ from these two investment options at t must be equalized. This leads

to the following arbitrage equation between bubbles and trees:

$$\lambda \frac{1+r_t}{1-\frac{\rho_0}{1+r_{t+1}}} + (1-\lambda) \frac{1+r_t}{1-\frac{\rho_0}{1+r_{t+1}^-}} = \lambda \frac{1+\tilde{r}_t}{1-\frac{\rho_0}{1+r_{t+1}}} \quad (10)$$

This in turn implies that $1+\tilde{r}_t > (1+r_t)/\lambda$. Despite risk neutrality, stochastic bubbles feature a liquidity premium: they command positive net excess returns $\lambda(1+\tilde{r}_t) - (1+r_t)$. The intuition is straightforward. Bubbles deliver no return when internal wealth is the most valuable: when liquidity is scarce, interest rates are low and internal funds can be levered a lot.

There are multiple equilibria with such stochastic bubble, exactly as in our baseline model. There exists a unique *conditional* bubbly steady state: A competitive equilibrium such that the variables (i_t, b_t) are constant and equal to (i^{**}, b^{**}) with $b^{**} > 0$ until the sunspot variable realizes and the bubble crashes. At such a conditional steady state, the bubble is constant (until it crashes) and hence $1+\tilde{r}^{**} = 1$. Moreover

$$1+r^{**} = \left(1 + \frac{1-\lambda}{\lambda} \frac{1-\frac{\rho_0}{1+r^{**}}}{1-\frac{\rho_0}{1+r^{**}-}}\right)^{-1}, \quad \frac{l + \rho_0 \frac{A+l\frac{r^{**}}{1+r^{**}}}{1-\rho_0}}{1-\frac{\rho_0}{1+r^{**}-}} = \frac{A(1+r^{**})-l}{\rho_0}$$

$$i^{**} = \frac{A+l\frac{r^{**}}{1+r^{**}}}{1-\rho_0} \quad \text{and} \quad b^{**} = \frac{A+l\frac{r^{**}}{1+r^{**}}}{1-\rho_0} \left(1 - \frac{\rho_0}{1+r^{**}} - \rho_0\right) - l.$$

The condition for the existence of a bubble becomes¹⁷

$$\frac{1-\frac{\rho_0}{1+r^{**}}-\rho_0}{1-\rho_0} > \left[\frac{1}{1+\frac{l}{A}\frac{r^{**}}{1+r^{**}}} \right] \frac{l}{A}. \quad (\text{B}^{\prime\prime})$$

This condition is more likely to be verified, the higher is r^{**} . It coincides with condition (B) when $r^{**} = 0$. Note that we necessarily have $(1+r^{**})/\lambda < 1+\tilde{r}^{**} = 1$ so that $r^{**} < \lambda - 1 < 0$. As a result, condition (B^{''}) is more stringent than condition (B): condition (B^{''}) implies condition (B).

Proposition 7 *Suppose that (B^{''}) holds and that $l > 0$, then:*

¹⁷Unfortunately, this condition determines only implicitly the parameter region that leads to the possibility of bubbles. It features an endogenous object r^{**} . This complication arises for the following reason. Bubbles now present a risk premium and thus a positive net excess return: $\lambda(1+\tilde{r}^{**}) - (1+r^{**}) > 0$. In a conditional bubbly steady state, zero bubble growth pins down the expected return on bubbles: $1+\tilde{r}^{**} = 1$, but the risk-free rate r^{**} has to be determined jointly with r^{**} as solutions to a non-linear system.

- (i) in any competitive equilibrium with a strictly positive bubble, before the bubble bursts, the bubble features a liquidity premium;
- (ii) in any competitive equilibrium with a strictly positive bubble, the bursting of the bubble decreases interest rates: firms scramble for collateral, which becomes more valuable;
- (iii) in any competitive equilibrium, when the bubble bursts, investment immediately decreases; then, the economy gradually converges to the bubble-free steady state;
- (iv) in the conditional bubbly steady state—before the bubble bursts—as the probability of bursting $(1 - \lambda)$ increases, the interest rate r^{**} and the bubble b^{**} decrease; investment i^{**} decreases;
- (v) in the conditional bubbly steady state, interest rates and investment are high ($r^{**} > r^*$ and $i^{**} > i^*$).

For example, when $l > 0$, steady state investment i^{**} , bubble size b^{**} and interest rate r^{**} are all decreasing in the probability $1 - \lambda$ that the bubble crashes. A more stable bubble provides more liquidity and is more conducive to investment. This in turn boosts the demand for liquidity and makes for a larger bubble.

A full characterization of the dynamics is outside the scope of this paper. Indeed, an extra state variable is required to describe the economy. The state space is now given by the triple (i_{t-1}, b_t, r_t) . The reason past interest rates r_t have to be kept track of is that the arbitrage equation (10) involves both the interest rate at date t and at date $t + 1$. As a consequence, simple two-dimensional phase diagrams cannot be used anymore. A full characterization of the stability properties of the different steady states and their basin of attraction is rather involved and outside the scope of this paper.

Remark 1. Imagine that there is a stochastic bubble in an economy with heterogeneity in pledgeable income as in Section IV.1. Equation (10) has the implication that firms with higher ρ_0^k will demand a higher expected return to hold the bubble. Therefore, in equilibrium, the bubble will be held by the firms with the lowest ρ_0^k . When $l > 0$, we showed in Proposition 6 that for a given portfolio, these firms are also the firms whose investment decreases the most in percentage terms when the bubble crashes. The result is an amplification mechanism whereby the equilibrium allocation of the bubble across firms magnifies the impact of a crash. In equilibrium, firms with a high ρ_0^k do not hold the bubble so that their net worth is insulated from the bubble crash. Moreover, they can increase their leverage more than firms with a low ρ_0^k in response to the drop in interest rates that follows the crash of the bubble. Conversely,

firms with a low ρ_0^k hold the bubble so that their net worth is impaired when the bubble crashes. In addition, their leverage increases less than firms with a high ρ_0^k in response to the drop in interest rates that follows the crash of the bubble.

IV.3 Stochastic bubbles (2): endogenous crashes

Following up on section (IV.2), we modify the environment in the following way. Suppose that A follows a two-state Markov process $A \in \{A_H, A_L\}$ with $A_H > A_L$. Initially $A = A_H$. With probability $1 - \lambda > 0$ per period, A transitions to A_L which is an absorbing state.

We assume that (B^{''}) is verified for an exogenous bursting probability $(1 - \lambda)$ in an economy with a deterministic and constant A equal to A_H . Similarly, we assume that for any $\lambda \in [0, 1]$, (B) is violated in an economy with a deterministic and constant A equal to A_L . Hence if the economy is already in the state of low net worth $A = A_L$, the demand for liquidity is low, the interest rate is high and bubbles cannot exist. Bubbles however, can exist as long as net worth is high: $A = A_H$.

Suppose that $A_t = A_H$ and consider the economy entering period $t+1$ with state variables given by (b_t, i_{t-1}, r_t) . Then if $A_{t+1} = A_H$, (b_{t+1}, i_t, r_{t+1}) are given by the same equations as in Section IV.2 with $A = A_H$. On the other hand if $A_{t+1} = A_L$, then the bubble bursts: $b_t = 0$ and i_t is given by the same equations as above with $A = A_L$ and $b_t = 0$. The economy then evolves as in Section II.2.

Proposition 8 *Assume that (B^{''}) holds with $A = A_H$ but that (B) is violated with $A = A_L$. Consider an economy where in the initial period the economy is in steady state along the bubbly path and $A_t = A_H$. In the first period where $A_t = A_L$, the bubble bursts. Then, the economy converges to the bubble-free steady state corresponding to $A = A_L$.*

The mechanics of a bubble crash are similar to those of the previous section. The difference is that in Section IV.2, the burst of the bubble was triggered by the realization of a pure sunspot variable. Here by contrast, the burst of the bubble is triggered by an adverse fundamental shock to initial net worth A of entrepreneurs. When this shock occurs, the demand for liquidity drops enough that bubbles are not feasible anymore.

This environment makes clear that when $l > 0$, bad shocks to corporate balance sheets can potentially have an amplified negative effect on investment over and above that described

in the literature emphasizing the importance of corporate net worth—for example Bernanke-Gertler (1989) and Kiyotaki-Moore (1997)—by triggering liquidity dry-ups in the form of bubble bursts.

V Discussion and Robustness

V.1 Negative outside liquidity

We now assume that net outside liquidity l is negative. This can be motivated by imagining that there is a demand for outside liquidity from an unmodelled part of the economy (another group of consumers, or foreigners) who demand liquidity in excess of the supply of trees. We develop some of these ideas in Section V.3.

We focus on steady states. Detailed derivations, as well as an analysis of the dynamics, can be found in Appendices A1, A2, and A4.

Steady states. There is a unique bubble-free steady state which corresponds to the intersection of the $b_t = 0$ locus with $i_t = i_{t-1} \geq 0$; this steady state is always stable.¹⁸ If (B) holds, there are two intersections between the $i_t = i_{t-1}$ and the $b_{t+1} = b_t$ schedules such that $b_t > 0$. The corresponding investment levels are given by $-l(1 - \rho_0)/\rho_0$ and $A/(1 - \rho_0)$. As long as the following condition is satisfied, the lowest solution corresponds to an unstable bubbly steady state and the highest solution to a saddle-path-stable bubbly steady state:

$$-\frac{l}{A} < \frac{\rho_0}{(1 - \rho_0)^2}. \quad (11)$$

Condition (11) is more likely to be verified, the lower the net demand $-l$ for outside liquidity, the higher the level of pledgeable income ρ_0 and the higher the net worth of entrepreneurs A . We maintain it throughout this section. When there is no risk of confusion, we refer to the saddle-path-stable bubbly steady state, with a slight abuse of terminology, as the bubbly steady state.

Proposition 9 *Suppose that $l < 0$, then:*

(i) r^* increases with l ; steady state investment i^* increases with l when the interest rate is high enough so that (6) is verified; more precisely, there exists \tilde{l}_0 such that for all l , $\frac{\partial i^*}{\partial l} > 0$

¹⁸We have $b^i(0) = -l > 0$ and $b^b(0) = (1 - \rho_0)(A - l)$ which is strictly positive as long as (B) holds.

if and only if $l > \tilde{l}_0$; moreover we have $\tilde{l}_0 > 0$ if and only if $\rho_0 < 1/2$;
(ii) suppose that (B) and (11) hold, then investment at the bubbly steady state is lower than investment at the bubble-free steady state $i^{**} = A/(1 - \rho_0) < i^*$;
(iii) suppose that (11) holds, then the results in Propositions 4 and 5 extend to the case $l < 0$.

The first part of the proposition focuses on the question of whether outside liquidity crowds investment in or out at the bubble-free steady state. This result generalizes that of Proposition 2: outside liquidity crowds investment in when outside liquidity is abundant enough.

The second part of the proposition focuses on the question of whether bubbles crowd investment in or out by comparing the bubble-free and bubbly steady states. Bubbles always increase interest rates, which reduces the value of the trees. When $l > 0$, the non-corporate sector is a net seller of trees. The bubble then operates a transfer from the non-corporate sector to the corporate sector, which increases investment. *Bubbles and investment are complements*. When $l < 0$, the opposite happens and bubbles crowd investment out. *Bubbles and investment are then substitutes*. Figure 4 provides a convenient summary.

The third part of the Proposition shows that both our efficiency results in Proposition 5 and our results for the interest rate test to infer the possibility of bubbles in Proposition 4, generalize to the case $l < 0$.

Remark 2. Entrepreneurs' preferences were chosen such that they save their entire endowment when young, and invest all the resulting wealth when middle aged. Appendix A4 relaxes this assumption and allows more flexibility in the entrepreneurs' savings/dissavings choices. It turns out that the results obtained in this paper carry over, with the one following caveat. Once we allow for flexibility in the entrepreneurs savings/dissavings choices, it is still true that bubbles boost investment when outside liquidity l exceeds some threshold, this threshold need not be equal to zero, and instead may either be positive or negative.

V.2 Public debt as outside liquidity

In a non-Ricardian environment, public debt can be a form of outside liquidity. Indeed, imagine that there are consumers who live for one period, receive income w . Imagine that the government taxes a portion $\tilde{l} < w$ of their income, and issues bonds one period ahead that are claims on the tax proceeds \tilde{l} . Let π be the number of newly-born consumers per

newly-born entrepreneur. At date t the government receives $\tilde{l}\pi/(1+r_{t+1})$ from the bond issuance and distributes it to consumers. Then $l = \tilde{l}\pi$. By issuing debt and redeeming it by taxing newly-born consumers, the government is able to increase the supply of outside liquidity.

As long as $1+r_{t+1} > 1$, this policy makes consumers worse off. However, when condition (B) holds so that bubbles are possible, the government can issue debt and constantly roll it over without ever raising taxes: the bubble and government debt become isomorphic. Hence, a possible reinterpretation of the model is that the bubble is government debt. Under this interpretation, when liquidity is scarce—condition (B) holds—the government can increase the supply of outside liquidity at no cost to the government budget (without ever having to raise taxes).

V.3 Interest-rate sensitive outside liquidity

In this section, we provide some other microfoundations for outside liquidity. In these other foundations l decreases with the interest rate. We show how to extend some of our most important results to this more general case.

Unconstrained firms. Suppose that there also exists a competitive fringe of firms operating a concave production function $f(k_t)$. These firms are owned by consumers who only consume when young. Consumers then sell the firms to investors for a price $f(k_t)/(1+r_t) - k_t$ where k_t is the equilibrium investment level. In equilibrium, it will be the case that $f'(k_t) = 1+r_t$ so that $k_t = k(r_t)$ where k is decreasing in r_t . This creates a net positive supply of trees $l_t = l(r_t) \equiv f(k(r_t))$.

Consumers as borrowers and securitization. Suppose that consumers have concave preferences and hence an elastic borrowing margin. They live for two periods and have preferences given by

$$u(c^y) + \beta u(c^o)$$

where c^y and c^o denote respectively consumption when young and old. They earn income w^y when young and w^o when old. To simplify the analysis, we focus on the case of log preferences where $u(c) = \log(c)$. In this case, consumers of generation t , facing interest rate r_t , consume

$$c_t^y = \frac{1}{1+\beta} \left(w^y + \frac{w^o}{1+r_t} \right) \text{ and } c_t^o = \frac{\beta}{1+\beta} ((1+r_t)w^y + w^o).$$

The supply of trees from the consumers' sector is therefore

$$l_t = l(r_t) \equiv w^o - \frac{\beta}{1 + \beta} ((1 + r_t)w^y + w^o)$$

where $l(r_t)$ is decreasing with r_t .

In this analysis, consumers do not face collateral constraints when they borrow. In practice, they often do; furthermore, the institutions that determine the extent to which claims on consumers' future income can be transformed into stores of value have high policy relevance.¹⁹

Generalizing the analysis to interest-sensitive outside liquidity. Let us now analyze a framework that encompasses all the examples mentioned above. There is a net supply of assets owned by another sector of the economy (which we call the consumers' sector) in the amount $l_t = l(r_t)$, where l is decreasing in r_t .

The supply and demand equations for assets are now given by

$$i_t = \frac{l_t + b_t + \rho_0 i_{t-1}}{1 - \frac{\rho_0}{1+r_{t+1}}} \text{ and } i_t = \frac{A(1 + r_{t+1}) - l_{t+1} - (1 + r_{t+1})b_t}{\rho_0}.$$

The dynamics of this economy are harder to analyze because the endogeneity of l_t imposes to keep track of an additional state variable in addition to i_{t-1} and b_t : the past level of the interest rate r_t . However, the state-steady analysis remains very tractable. In the bubbly steady state

$$i^{**} = \frac{A}{1 - \rho_0}, \quad b^{**} = A \frac{1 - 2\rho_0}{1 - \rho_0} - l(0), \text{ and } r^{**} = 0.$$

Note that investment in the bubbly steady state is independent of the function $l(r_t)$. There is perfect crowding out between bubbles and trees: $b^{**} + l(0)$ is independent of the function $l(r_t)$ away from zero interest rates.

¹⁹Suppose that consumers have some endowment of goods w —labor income—in their youth. They use that labor income to build a house, which has total value $y_1 j_t$ at period $t + 1$, where j_t is the home investment realized in period t . However, suppose only a fraction $y_0 j_t < y_1 j_t$ can be collateralized. Consumers can invest up to $w/[1 - y_0/(1 + r_t)]$ in housing. Consumers thus create $l_t = l(r_t)$ additional stores of values for the corporate sector where $l(r_t) \equiv y_0 w/[1 - y_0/(1 + r_t)]$. An increase in securitization—in the form of mortgage backed securities for example—can be formalized as an increase in y_0 towards y_1 and materializes as an increase in l_t . In this microfoundation, the amount of trees $l(r_t)$ is endogenous as it decreases with the interest rate.

The condition for the bubbly steady state becomes

$$A \frac{1 - 2\rho_0}{1 - \rho_0} - l(0) > 0. \quad (\text{B''})$$

We continue to denote investment and the interest rate that prevail at the bubble-free steady state by i^* and r^* .

Proposition 10 *Suppose that (B'') holds. Then the interest rate at the bubble-free steady state is negative: $r^* < 0$.*

(i) *If $l(r^*) > 0$, investment in the bubbly steady state i^{**} is higher than investment i^* in the bubble-free steady state.*

(ii) *If $l(r^*) < 0$ and $-\frac{1-\rho_0}{\rho_0}l(r^*) < \frac{A}{1-\rho_0}$, investment in the bubbly steady state i^{**} is lower than investment i^* in the bubble-free steady state.*

Remark 3. In the model with unconstrained firms, we have $l(r^*) = f(k^*) > 0$. Proposition 10 then shows that $i^{**} > i^*$. However, note that the steady state investment level for unconstrained firms in a bubbly steady state is lower than in the non-bubbly steady state: $k^{**} < k^*$. This is the standard crowding-out effect of bubbles on investment emphasized in Tirole (1985) in the context of the model of Diamond (1965). Therefore, bubbles crowd in the investment of constrained firms ($i^{**} > i^*$) but crowd out the investment of unconstrained firms ($k^{**} < k^*$).

VI Conclusion

This paper suggests a number of promising research avenues. Three themes seem to us particularly interesting. First, we have only briefly touched in Section IV.2 on the question of who should hold the bubble. There we saw that a stochastic bubble is held in equilibrium by the firms with the lowest pledgeable income. To explore the ownership question further, one could, for example, allow less levered agents such as consumers to hold the bubble. Second, our model is too stylized to analyze the specific role of monetary policy, or the interaction between prudential regulation and interest rate policy; developing the model along this dimension would be interesting. Third, it would be worth introducing the possibility of bailouts. In Farhi and Tirole (2010), we investigate this question and point out that systemic bailouts (for example through lax interest rate policy in response to a crisis) result in strategic

complementarities in liquidity and portfolio choices. The financial institutions' incentive to correlate their positions on the overvalued assets would have implications for macro-dynamics and public debt.

Our analysis has been deliberately theoretical. Its implications for public policy require further thought and extensions. Economies recurrently generate cycles of asset price overvaluations, credit booms, and, when bubbles burst, recessions. Potential applications to the measurement of capital adequacy abound. For example, asset price overvaluation and crashes are closely related to the policy debates on pro-cyclical regulation, fair value accounting, and deleveraging in busts. Similarly, an analysis of the link between bubbles and the scarcity of liquidity can shed light on public policies controlling the supply of outside liquidity, for example by adjusting the level of public debt or by tightening or relaxing securitization standards. Finally, this type of analysis can shed light on the link between bubbles and financial development.²⁰ Our stance that policy implications lie outside the scope of our paper should not obscure the potential fruitfulness of such policy investigations.

²⁰Financial development in our model is captured by the quality of governance (ρ_0) and the existing stock of traded securities ($\rho_0 i_{t-1}$).

References

- Abel, A.B., Mankiw, N.G., Summers, L.H., and R.J. Zeckhauser (1989), “Assessing Dynamic Efficiency: Theory and Evidence,” *Review of Economic Studies*, 56(1): 1–19.
- Abreu, D. and M. Brunnermeier (2003) “Bubbles and Crashes,” *Econometrica*, 71(1): 173–204.
- Allais, M. (1947), *Economie et Intérêt*, Paris, Imprimerie Nationale et Librairie des Publications Officielles.
- Adrian, T. and H. Shin (2008), “Financial Intermediaries, Financial Stability and Monetary Policy,” paper presented at Jackson Hole.
- Aiyagari, R. (1994), “Uninsured Idiosyncratic Risk and Aggregate Saving,” *Quarterly Journal of Economics*, MIT Press, 109: 659–684.
- Allen, F. and D. Gale (2000), “Bubbles and Crises,” *Economic Journal*, 110: 236-255.
- Allen, F. and G. Gorton (1993), “Churning Bubbles,” *Review of Economic Studies*, 60: 813-836.
- Allen, F., Morris, S. and A. Postlewaite (1993), “Finite Bubbles with Short-Sale Constraints and Asymmetric Information,” *Journal of Economic Theory*, 61: 206-230.
- Azariadis, C. (1993), *Intertemporal Macroeconomics*, Blackwell.
- Balasko, Y., and K. Shell (1981), “The Overlapping Generations Model II: The Case of Pure Exchange with Money,” *Journal of Economic Theory*, 24: 112-142.
- Cass, D., Okuno, M. and I. Zilcha (1979), “The Role of Money in Supporting Pareto Optimality of the Competitive Equilibrium in Consumption Loan Type Models,” *Journal of Economic Theory*, 11: 41-80.
- Barlevy, G. (2009). “A Leverage-based Model of Speculative Bubbles,” working paper, Federal Reserve Bank of Chicago.
- Bernanke, B. (2002), “Asset Price ‘Bubbles’ and Monetary Policy,” Remarks before the New York chapter of the National Association for Business Economics, New York.

- Bernanke, B. (2005), “The Global Saving Glut and the U.S. Current Account Deficit,” Sandridge Lecture, Virginia Association of Economics, Richmond, Virginia, Federal Reserve Board.
- Bernanke, B. and M. Gertler (1989), ”Agency Costs, Net Worth, and Business Fluctuations,” *American Economic Review*, 79, 14–31.
- Bernanke, B., and M. Gertler (2000), “Monetary Policy and Asset Price Volatility,” NBER Working Paper No. 7559.
- Bernanke, B. , and M. Gertler (2001), “Should Central Banks Respond To Movements in Asset Prices?” *American Economic Review, Papers and Proceedings*, 91(2): 253–257.
- Bewley, T. (1986), “Stationary Monetary Equilibrium With a Continuum of Independently Fluctuating Consumers,” in *Contributions to Mathematical Economics in Honor of Gérard Debreu*, ed. By W. Hildenbrand, and A. Mas-Colell. North Holland, Amsterdam.
- Bordo, M. and O. Jeanne (2002), “Boom-Busts in Asset Prices, Economic Instability, and Monetary Policy,” NBER Working Paper 8966.
- Caballero, R., and A. Krishnamurthy (2006), “Bubbles and Capital Flow Volatility: Causes and Risk Management,” *Journal of Monetary Economics*, 53(1): 35–53.
- Caballero, R.J., Farhi, E. and P.O. Gourinchas (2008a), “An Equilibrium Model of Global Imbalances and Low Interest Rates,” *American Economic Review*, 98(1): 358-93.
- Caballero, R.J., Farhi, E. and P.O. Gourinchas (2008b), “Financial Crash, Commodity Prices, and Global Imbalances,” *Brookings Papers on Economic Activity*, 2: 1–55.
- Caballero, R., Farhi, E., and J. Ventura (2007), “Unique Bubbles,” mimeo.
- CEBS (2009), “Position Paper on a Countercyclical Capital Buffer”, July 17.
- Conlon, J. (2004). “Simple Finite Horizon Bubbles Robust to Higher Order Knowledge,” *Econometrica*, 72: 927–36.
- Diamond, P. (1965), “National Debt in a Neoclassical Growth Model,” *American Economic Review*, 55: 1126–1150.

- Dobles-Madrid, A. (2009). "A Robust Model of Bubbles with Multidimensional Uncertainty," working paper, Michigan State University.
- Farhi, E. and J. Tirole (2010), "Collective Moral Hazard, Maturity Mismatch and Systemic Bailouts," forthcoming, *American Economic Review*.
- Gale, D. (1973), "Pure Exchange Equilibrium of Dynamic Economic Models," *Journal of Economic Theory*, 5: 12-36.
- Grandmont, J.M. (1985), "On Endogenous Competitive Business Cycles," *Econometrica*, 53: 995-1045.
- Gilchrist, S., and J. Leahy (2002), "Monetary Policy and Asset Prices," *Journal of Monetary Economics* 49: 75–97.
- Grossman, G.M. and N. Yanagawa (1993), "Asset Bubbles and Endogenous Growth," *Journal of Monetary Economics*, 31(1): 3–19.
- Hahn, F. (1982), *Money and Inflation*, Basil Blackwell.
- Hirano, T., and N. Yanagawa (2010) "Asset Bubbles, Endogenous Growth, and Financial Frictions," mimeo.
- Holmström, B., and J. Tirole (1998), "Private and Public Supply of Liquidity," *Journal of Political Economy*, 106(1): 1–40.
- King, I. and D. Ferguson (1993), "Dynamic Inefficiency, Endogenous Growth, and Ponzi games," *Journal of Monetary Economics*, 32(1): 79–104.
- Kiyotaki, N., and J. Moore (1997), "Credit Cycles," *Journal of Political Economy*, 105(2): 211–248.
- (2008), "Liquidity, Business Cycles and Monetary Policy," mimeo.
- Kocherlakota, N. (2009), "Bursting Bubbles: Consequences and Cures," mimeo, University of Minnesota.
- Lagos, R., and R. Wright (2005) "A Unified Framework for Monetary Theory and Policy Analysis," *Journal of Political Economy*, 113(3): 463–484.
- Olivier, J. (2000), "Growth-Enhancing Bubbles," *International Economic Review*, 41(1): 133–151.

- Nosal, E. and G. Rocheteau (2010), *A Search Approach to Money, Payments, and Liquidity*, forthcoming in MIT Press.
- Rocheteau, G. and R. Wright (2005), “Money in Search Equilibrium, in Competitive Equilibrium, and in Competitive Search Equilibrium,” *Econometrica*, 73: 175–202.
- Rocheteau, G. and R. Wright (2010), “Liquidity and Asset Market Dynamics,” mimeo, University of California-Irvine and University of Wisconsin-Madison.
- Saint Paul, G. (1992), “Fiscal Policy in an Endogenous Growth Model,” *Quarterly Journal of Economics*, 107(4): 1243–1260.
- (2005), “Fiscal Policy and Economic Growth: The Role of Financial Intermediation,” *Review of International Economics*, 13(3): 612–629.
- Santos, M.S. and M. Woodford (1997), “Rational Asset Pricing Bubbles,” *Econometrica*, 65(1): 19–58.
- Scheinkman, J., and W. Xiong (2003). “Overconfidence and Speculative Bubbles,” *Journal of Political Economy* 111(6): 1183–1220.
- Tirole, J. (1985), “Asset Bubbles and Overlapping Generations,” *Econometrica*, 53(6): 1499–1528.
- (2006), *The Theory of Corporate Finance*, Princeton University Press.
- US Treasury (2009), “Financial Regulatory Reform : A New Foundation”, June 17.
- Ventura, J. (2003), “Bubbles and Capital Flows,” CEPR discussion paper #3657.
- Wallace, N. (1980), “The Overlapping Generations Model of Fiat Money,” *Models of Monetary Economies*, ed. by J. Kareken and N. Wallace, Federal Reserve Bank of Minneapolis.
- Weil, P. (1987), “Confidence and the Real Value of Money in an Overlapping Generations Economy,” *Quarterly Journal of Economics*, 102: 1–22.
- Williamson, S. and R. Wright (2010), “New Monetarist Economics: Models,” forthcoming in *Handbook of Monetary Economics*.
- Woodford, M. (1990), “Public Debt as Private Liquidity,” *American Economic Review* 80(2): 382–388.

Appendix

A.1 Proofs for Section II

Although we focus on the case $l \geq 0$ in the text, the derivations in this Appendix A1 are also valid when $l < 0$. We make use of some of these results when we turn to the case $l < 0$ in Section V.1.

Derivation of the closed-form expressions for the policy functions Φ^i , Φ^r and Φ^b in the bubble-free case. Assume that $b_t = 0$. The system of two equations (2,3) in the two unknowns (i_t, r_{t+1}) can be solved as follows. Using equation (3) to find an expression for r_{t+1} and replacing this expression in equation (2), we are led to the following a quadratic equation:

$$i_t^2 - \left[A + \rho_0 i_{t-1} - l \left(\frac{1}{\rho_0} - 1 \right) \right] i_t - \frac{l(l + \rho_0 i_{t-1})}{\rho_0}. \quad (12)$$

Given a solution to this equation, we can then compute the associated interest rate $1 + r_{t+1} = (\rho_0 i_t + l) / A$. The only solution of equation (12) with $i_t \geq 0$ and an associated interest rate such that $1 + r_{t+1} \geq \rho_0$ is given by:

$$i_t = \frac{A + \rho_0 i_{t-1} - \left(\frac{1}{\rho_0} - 1 \right) l + \sqrt{\left[A + \rho_0 i_{t-1} - \left(\frac{1}{\rho_0} - 1 \right) l \right]^2 + 4 \frac{l}{\rho_0} (l + \rho_0 i_{t-1})}}{2}. \quad (13)$$

Using the asset demand equation (3) we can compute the associated interest rate:

$$1 + r_{t+1} = \rho_0 \frac{A + \rho_0 i_{t-1} + \left(1 + \frac{1}{\rho_0} \right) l + \sqrt{\left[A + \rho_0 i_{t-1} - \left(\frac{1}{\rho_0} - 1 \right) l \right]^2 + 4 \frac{l}{\rho_0} (l + \rho_0 i_{t-1})}}{2(A - b_t)}. \quad (14)$$

Derivation of the bubble-free steady state. A steady state (i^*, r^*) of the bubble-free economy solves

$$i^* = \frac{l + \rho_0 i^*}{1 - \frac{\rho_0}{1+r^*}} \quad \text{and} \quad i^* = \frac{A(1+r^*) - l}{\rho_0}.$$

This yields the following quadratic equation in i^* :

$$i^{*2} (1 - \rho_0) - i^* \left[A + l - \left(\frac{1}{\rho_0} - 1 \right) l \right] - \frac{l^2}{\rho_0} = 0. \quad (15)$$

This equation has two solutions. When $l \neq 0$, one of these solutions is strictly negative, and the other one is strictly positive. The strictly positive solution is given by:

$$i^* = \frac{(A + l) - \left(\frac{1}{\rho_0} - 1\right)l + \sqrt{\left[(A + l) - \left(\frac{1}{\rho_0} - 1\right)l\right]^2 + 4\frac{l^2}{\rho_0}(1 - \rho_0)}}{2(1 - \rho_0)}. \quad (16)$$

Using $1 + r^* = (\rho_0 i^* + l)/A$, we can compute the associated interest rate r^* :

$$1 + r^* = \rho_0 \frac{A + \frac{l}{\rho_0} + \sqrt{\left[(A + l) - \left(\frac{1}{\rho_0} - 1\right)l\right]^2 + 4\frac{l^2}{\rho_0}(1 - \rho_0)}}{2A(1 - \rho_0)}. \quad (17)$$

When $l = 0$, we have $1 + r^* = \rho_0/(1 - \rho_0) > \rho_0$. When $l > 0$, we have $1 + r^* > \rho_0/(1 - \rho_0)$. This is obvious when from the equation $i^* = l/(1 - \rho_0 - \rho_0/(1 + r^*))$.²¹

With $l = 0$, the second solution of equation (16) features positive (in fact zero) investment. It is given by

$$i^* = 0$$

and

$$1 + r^* = 0.$$

However, this does not correspond to a competitive equilibrium (which requires $1 + r^* \geq \rho_0$).

Proof of Proposition 1. We know that the steady state is the unique intersection of the function $i \rightarrow \Phi^i(i, 0)$ with the identity function $i \rightarrow i$ on $[0, \infty)$. We can compute

$$\Phi^i(0, 0) = \frac{A - [\frac{1}{\rho_0} - 1]l + \sqrt{\left\{A - [\frac{1}{\rho_0} - 1]l\right\}^2 + 4\frac{l^2}{\rho_0}}}{2} > 0.$$

Similarly

$$\Phi^i(i, 0) \sim_{i \rightarrow \infty} \frac{\rho_0}{2}i.$$

This ensures that $\Phi^i(i, 0) > i$ for i low enough and $\Phi^i(i, 0) < i$ for i high enough. Since there is

²¹Note that the analysis extends to the case $l < 0$. In this case, the function $l/[1 - \rho_0/(1 + r^*) - \rho_0]$ is convex and increasing. It increases from $-l/\rho_0$ to $+\infty$ on $(\rho_0, \frac{\rho_0}{1 - \rho_0})$. The function $[A(1 + r^*) - l]/\rho_0$ is linear and increasing. It increases from $A - l/\rho_0 > -l/\rho_0$ to $A/(1 - \rho_0) - l/\rho_0$ on $(\rho_0, \frac{\rho_0}{1 - \rho_0})$. The unique intersection of these functions on $(\rho_0, \frac{\rho_0}{1 - \rho_0})$ is given by (16) and (17). Hence $\rho_0/(1 - \rho_0) > 1 + r^* > \rho_0$.

a unique positive solution to $\Phi^i(i, 0) = i$, this proves that $\Phi^i(i, 0) > i$ for $i < i^*$ and $\Phi^i(i, 0) < i$ for $i > i^*$. Since in addition, $\Phi^i(i, 0)$ is increasing in i , we have that $i^* > \Phi^i(i, 0) > i$ for $i < i^*$ and $i^* < \Phi^i(i, 0) < i$ for $i > i^*$. This ensures that this steady state is stable.

Proof that r^ increases with l .* We have

$$\frac{dr^*}{dl} = \frac{(1 + r^*) - \rho_0}{2A(1 - \rho_0) \sqrt{[A\rho_0 + l]^2 - 4Al(1 - \rho_0)\rho_0}} > 0.$$

A.2 Proofs for Section III

Although we focus on the case $l \geq 0$ in the text, the derivations in this Appendix A2 are also valid when $l < 0$, except for the proof of Proposition 3 which is specific to the case $l \geq 0$. We make use of some of these results when we turn to the case $l < 0$ in Section V.1.

Derivation of the closed-form expressions for the policy functions Φ^i , Φ^r and Φ^b . The system of two equations (2,3) in the two unknowns (i_t, r_{t+1}) can be solved as follows. Using equation (3) to find an expression for r_{t+1} and replacing this expression in equation (2), we are led to the following a quadratic equation:

$$i_t^2 - \left[A + \rho_0 i_{t-1} - l \left(\frac{1}{\rho_0} - 1 \right) \right] i_t - \frac{l(l + b_t + \rho_0 i_{t-1})}{\rho_0}. \quad (18)$$

Given a solution to this equation, we can then compute the associated interest rate $1 + r_{t+1} = (\rho_0 i_t + l) / (A - b_t)$. When $l \geq 0$ $b_t < A$ is a necessary condition for equilibrium. When $l < 0$ we can have $b_t < A$ or $b_t \geq A$. Assume first that $b_t < A$. Then the only solution of equation (12) with $i_t \geq 0$ and an associated interest rate such that $1 + r_{t+1} \geq \rho_0$ is given by:

$$i_t = \frac{A + \rho_0 i_{t-1} - \left(\frac{1}{\rho_0} - 1 \right) l + \sqrt{\left[A + \rho_0 i_{t-1} - \left(\frac{1}{\rho_0} - 1 \right) l \right]^2 + 4 \frac{l}{\rho_0} (b_t + l + \rho_0 i_{t-1})}}{2}. \quad (19)$$

Using the asset demand equation (3) we can compute the associated interest rate:

$$1 + r_{t+1} = \rho_0 \frac{A + \rho_0 i_{t-1} + \left(1 + \frac{1}{\rho_0} \right) l + \sqrt{\left[A + \rho_0 i_{t-1} - \left(\frac{1}{\rho_0} - 1 \right) l \right]^2 + 4 \frac{l}{\rho_0} (b_t + l + \rho_0 i_{t-1})}}{2(A - b_t)}. \quad (20)$$

We now need to consider the case where $l < 0$ and $b_t \geq A$. In this case, there is a solution to the quadratic equation (12) with $i_t \geq 0$ and $1 + r_{t+1} \geq \rho_0$ if and only if

$$\left[A + \rho_0 i_{t-1} - \left(\frac{1}{\rho_0} - 1 \right) l \right]^2 + 4 \frac{l}{\rho_0} (b_t + l + \rho_0 i_{t-1}) \geq 0$$

and

$$A - b_t - \frac{l}{\rho_0} > b_t + l + \rho_0 i_{t-1}.$$

When these conditions hold, (19) and (20) still represent one solution with $i_t \geq 0$ and $1 + r_{t+1} \geq \rho_0$ ²², but there is now another solution given by

$$i_t = \frac{A + \rho_0 i_{t-1} - \left(\frac{1}{\rho_0} - 1 \right) l - \sqrt{\left[A + \rho_0 i_{t-1} - \left(\frac{1}{\rho_0} - 1 \right) l \right]^2 + 4 \frac{l}{\rho_0} (b_t + l + \rho_0 i_{t-1})}}{2}$$

and $1 + r_{t+1} = (\rho_0 i_t + l) / (A - b_t)$. We argue that this solution has undesirable characteristics and focus on the solution given by equation (19) and (20). Our motivation is that the other intersection displays perverse comparative statics: it has the unnatural feature that an upward shift in the asset demand curve leads to a decrease in i_{t-1} and a decrease in the price $1 / (1 + r_{t+1})$. This is because this solution corresponds to a point where the asset demand curve crosses the asset supply curve from above at the intersection with the lowest value of i_t . By contrast, the asset demand curve crosses the asset supply curve from below at the solution given by (19) and (20).

Derivation of the $i_t = i_{t-1}$ and $b_{t+1} = b_t$ schedules. Imposing $i_t = i_{t-1}$ in equation (2) we find

$$i_{t-1} \left(1 - \rho_0 - \frac{\rho_0}{1 + r_{t+1}} \right) = l + b_t. \quad (21)$$

Using equation (3), we can replace $1 / (1 + r_{t+1})$ in equation (21) by

$$\frac{1}{1 + r_{t+1}} = \frac{A - b_t}{l + \rho_0 i_{t-1}}.$$

²²In the particular case where $b_t = A$, equation (19) gives $i_t = -l / \rho_0$. Both the numerator and the denominator in expression for $1 + r_{t+1}$ in equation (20) are zero. The value of the interest rate is not pinned down by this equation. In this case, the value of the interest rate can be inferred from the asset supply equation

$$1 + r_{t+1} = \frac{\rho_0 i_t}{i_t - (l + b_t + \rho_0 i_{t-1})} = \rho_0 \frac{-\frac{l}{\rho_0}}{-\frac{l}{\rho_0} - (l + b_t + \rho_0 i_{t-1})}.$$

This yields to the following equation for the $i_t = i_{t-1}$ schedule:

$$b_t = i_{t-1}^2 \frac{\rho_0}{l} (1 - \rho_0) - \frac{\rho_0 i_{t-1}}{l} \left[A + \left(2 - \frac{1}{\rho_0} \right) l \right] - l,$$

Imposing $r_{t+1} = 0$ in equation (2), we find

$$i_t = \frac{l + b_t + \rho_0 i_{t-1}}{1 - \rho_0}. \quad (22)$$

Imposing $r_{t+1} = 0$ in equation (3) and imposing $r_{t+1} = 0$, we find

$$A = l + \rho_0 i_t + b_t.$$

Using equation (22) to replace i_t this expression can be rearranged as follows

$$b_t = -\rho_0^2 i_{t-1} + (1 - \rho_0) (A - l) - \rho_0 l$$

yielding the desired equation for the $b_{t+1} = b_t$ schedule.

A useful Lemma.

Lemma 2 *The interest rate $r_{t+1} = \Phi^r(i_{t-1}, b_t)$ is increasing in i_{t-1} and b_t .*

The proof of this lemma is as follows. In the derivation of the closed-form expressions for the policy functions Φ^i , Φ^r and Φ^b we proved the following: at the solution given by (19) and (20), the asset demand curve (3) crosses the asset supply curve (2) from below. Moreover, the asset supply curve is downward sloping. Since increases in i_{t-1} shift the asset supply curve upwards without affecting the asset demand curve. Increases in b_t shift the asset supply curve upwards and the asset demand curve downwards. In both cases, the interest rate r_{t+1} increases.

Proof of Lemmas 1 (and 3 below). The properties of the interest rate $r_{t+1} = \Phi^r(i_{t-1}, b_t)$ are a direct consequence of Lemma 2. Let us turn to the properties of investment $i_t = \Phi^i(i_{t-1}, b_t)$. We can solve for investment i_t as a function of i_{t-1} and b_t :

$$i_t = \frac{A + \rho_0 i_{t-1} + [1 - \frac{1}{\rho_0}]l + \sqrt{\left\{A + \rho_0 i_{t-1} + [1 - \frac{1}{\rho_0}]l\right\}^2 + 4\frac{l}{\rho_0}[b_t + l + \rho_0 i_{t-1}]}}{2}$$

From this expression, it is clear that i_t is increasing in i_{t-1} and b_t if $l > 0$ and decreases with b_t if $l < 0$. The other results follow directly from these properties of Φ^i and Φ^r .

Proof of Proposition 3. The $i_t = i_{t-1}$ schedule is given by

$$b^i(i_{t-1}) = i_{t-1}^2 \frac{\rho_0}{l} (1 - \rho_0) - \frac{\rho_0 i_{t-1}}{l} \left[A + \left(2 - \frac{1}{\rho_0} \right) l \right] - l.$$

The $b_t = b_{t+1}$ schedule is given by

$$b^b = -\rho_0^2 i_{t-1} + (1 - \rho_0) A - l.$$

The function $b^i(i_{t-1})$ is a parabola. We have $b^i(0) = -l < 0$. The function $b^i(i_{t-1})$ is strictly negative on $[0, i^*]$. It is strictly positive and strictly increasing on $(i^*, +\infty)$.

The function $b^b(i_{t-1})$ is linear and decreasing. We have $b^b(0) = (1 - \rho_0) A - l > 0$ from the bubble existence condition. The unique positive solution of $b^i(i_{t-1}) = b^b(i_{t-1})$ is the bubbly steady state i^{**} and $b^i(i^{**}) = b^b(i^{**}) = b^{**} > 0$. As a result, we necessarily have $i^{**} > i^*$. Since $b^b(i_{t-1})$ is decreasing, we have $b^b(i^*) > 0$. As a result, $1 + r^* < 1$ or equivalently, $r^* < 0$. This proves the first part of the proposition.

Consider two competitive equilibria $\{i_t, r_t, b_t\}$ and $\{i'_t, r'_t, b'_t\}$ such that $i_{-1} = i'_{-1}$ and $b'_0 > b_0$. Using Lemma 1, it follows that $b'_1 > b_1$ and $i'_1 > i_1$. By induction, we have $b'_t > b_t$ and $i'_t > i_t$ for all t . This also implies $r'_t > r_t$ for all t . This proves the second part of the proposition.

Consider the region $b_t \geq 0$ and $i_{t-1} > 0$. The curves $b^i(i_{t-1})$ and $b^b(i_{t-1})$ divide this region into four subregions. We call region A the set

$$\{(i_{t-1}, b_t) \mid b^b(i_{t-1}) \geq b_t \geq \max\{b^i(i_{t-1}), 0\} \text{ and } i_{t-1} > 0\}.$$

We call region B the set

$$\{(i_{t-1}, b_t) \mid \min\{b^i(i_{t-1}), b^b(i_{t-1})\} > b_t \geq 0 \text{ and } i_{t-1} > 0\}.$$

We call region C the set

$$\{(i_{t-1}, b_t) \mid b^i(i_{t-1}) \geq b_t \geq \max\{b^b(i_{t-1}), 0\} \text{ and } i_{t-1} > 0\}.$$

We call region D the set

$$\{(i_{t-1}, b_t) \mid b_t > \max\{b^i(i_{t-1}), b^b(i_{t-1})\} \text{ and } i_{t-1} > 0\}.$$

It will prove useful to subdivide region B into regions B1 and B2. Region B1 is the set

$$\{(i_{t-1}, b_t) \mid \min\{b^i(i_{t-1}), b^b(i_{t-1})\} > b_t \geq 0 \text{ and } i^{**} \geq i_{t-1} > 0\}.$$

Region B2 is the set

$$\{(i_{t-1}, b_t) \mid \min\{b^i(i_{t-1}), b^b(i_{t-1})\} > b_t \geq 0 \text{ and } i_{t-1} > i^{**}\}.$$

We will also subdivide region D into regions D1 and D2. Region D1 is the set

$$\{(i_{t-1}, b_t) \mid b_t > \max\{b^i(i_{t-1}), b^b(i_{t-1})\} \text{ and } i^{**} > i_{t-1} > 0\}.$$

Region D2 is the set

$$\{(i_{t-1}, b_t) \mid b_t > \max\{b^i(i_{t-1}), b^b(i_{t-1})\} \text{ and } i_{t-1} \geq i^{**}\}.$$

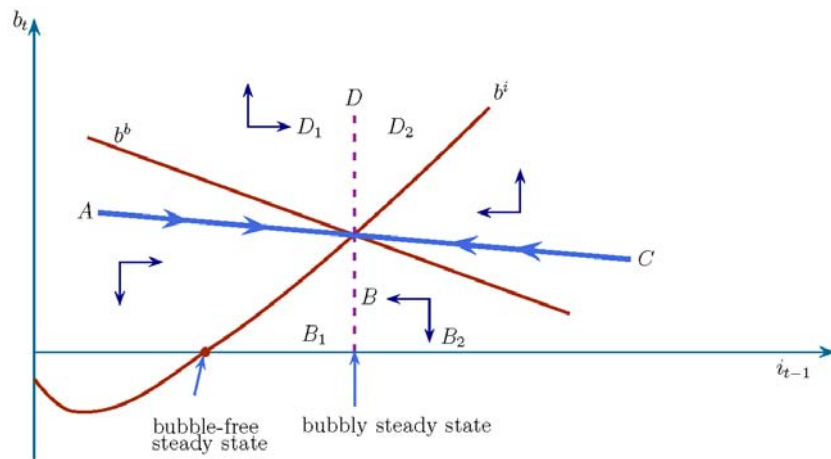


Figure 5: regions in the phase diagram with positive outside liquidity.

Consider a point (i_{t-1}, b_t) in region A. Then $b_t \leq b^b(i_{t-1})$. Using Lemma 1, we conclude that

$i_t \leq \Phi^i(i_{t-1}, b^b(i_{t-1}))$. It is easy to check that $\Phi^i(i_{t-1}, b^b(i_{t-1})) = \rho_0 i_{t-1} + A$. Therefore, we get $i_t \leq \rho_0 i^{**} + A = i^{**}$. Hence (i_t, b_{t+1}) is either in region A, in region B1 or in region D1.

Consider a point (i_{t-1}, b_t) in region C. Using Lemma 1, we conclude that $i_t \geq \Phi^i(i_{t-1}, b^b(i_{t-1})) = \rho_0 i_{t-1} + A \geq \rho_0 i^{**} + A = i^{**}$. Hence (i_t, b_{t+1}) is either in region C, in region B2 or in region D2.

Consider a point (i_{t-1}, b_t) in region B with $b_t > 0$. We show that (i_{t-1}, b_t) is part of a competitive equilibrium, and that this equilibrium converges to the bubble-free steady state $(i^*, 0)$. Using Lemma 1, we have $b_{t+1} < b_t$ and $i_t < i_{t-1}$. Hence (i_t, b_{t+1}) is either in region B or in region A with $b_{t+1} < b_t < b^{**}$. It is then clear that for all $s \geq 0$, (i_{t-1+s}, b_{t+s}) is in region B or in region A and satisfies $b_{t+s} < b_{t+s-1} < \dots < b_t < b^{**}$. The economy is eventually in region B1 or in region A. This follows because if (i_{t-1+s}, b_{t+s}) is in region A with $b_{t+s} \leq b^{**}$ or in region B1, then so will be $(i_{t-1+s'}, b_{t+s'})$ for all $s' \geq s$. The only other possibility is that (i_{t-1+s}, b_{t+s}) is in region B2 for all $s \geq 0$. But this would imply that $i_{t-1} > i_t > \dots > i_{t-1+s}$ and $b_{t+s} < b_{t+s-1} < \dots < b_t$, which implies that (i_{t-1+s}, b_{t+s}) converges. The convergence point is necessarily a steady state, but there are no steady states in region B2, a contradiction. Hence, for s high enough, we have $i_{t+s} \leq i^{**}$. But then since $b_{t+s} < b_t$, we have, using Lemma 1 that $r_{t+s+1} < \Phi^r(i^{**}, b_t) < \Phi^r(i^{**}, b^{**}) = r^{**} = 0$. This in turn implies that the bubble b_{t+s} converges to 0 when s goes to ∞ . Consider the equilibrium starting at (i'_{t-1}, b'_t) with $i'_{t-1} = i_{t-1}$ and $b'_t = 0$. We know that investment i'_{t-1+s} converges monotonically to i^* . Hence $i'_{t-1+s} \geq \min\{i^{**}, i_{t-1}\}$. Using Lemma 1, we have $i_{t-1+s} > i'_{t-1+s} \geq \min\{i^{**}, i_{t-1}\}$. This implies that the sequence $\{i_{t-1+s}\}_{s \geq 0}$ is bounded. Together with the fact that b_{t+s} converges to 0, this implies that the competitive equilibrium starting at (i_{t-1}, b_t) converges to the bubble-free steady state $(i^*, 0)$.

This proof also establishes that a point (i_{t-1}, b_t) in region A with $b_t < b^{**}$ is part of a competitive equilibrium, and that this equilibrium converges to the bubble-free steady state $(i^*, 0)$.

We show that a point (i_{t-1}, b_t) in region D cannot be part of an equilibrium. Suppose by contradiction that this point is reached in a competitive equilibrium. Using Lemma 1, we have $b_{t+1} > b_t$ and $i_t > i_{t-1}$. Hence (i_t, b_{t+1}) is either in region D or in region C. Since $b_{t+1} > b_t > b^{**}$, it is clear that for all $s \geq 0$, (i_{t-1+s}, b_{t+s}) is in region D or in region C and satisfies $b_{t+s} > b_{t+s-1} > \dots > b_t > b^{**}$. The economy is eventually in region D2 or in region C. This follows because if (i_{t-1+s}, b_{t+s}) is in region C with $b_{t+s} > b^{**}$ or in region D2, then so will be $(i_{t-1+s'}, b_{t+s'})$ for all $s' \geq s$. The only other possibility is that (i_{t-1+s}, b_{t+s}) is in region D1 for all $s \geq 0$. But this would imply that $i_{t-1} < i_t < \dots < i_{t-1+s} \leq i^{**}$ and $A \geq b_{t+s} > b_{t+s-1} > \dots > b_t$, which implies that (i_{t-1+s}, b_{t+s}) converges. The convergence point is necessarily a steady state, but there are no steady states in region D1, a contradiction. Hence, for s high enough, we have $i_{t+s} \geq i^{**}$.

But then since $b_{t+s} > b_t$, we have, using Lemma 1 $r_{t+s+1} > \Phi^r(i^{**}, b_t) > \Phi^r(i^{**}, b^{**}) = r^{**} = 0$. This in turn implies that the bubble b_{t+s} eventually reaches A , which is impossible in a competitive equilibrium, a contradiction.

This proof also establishes that a point (i_{t-1}, b_t) in region C with $b_t > b^{**}$ cannot be part of an equilibrium.

Consider a point in region (i_{t-1}, b_t) in region A with $b_t \geq b^{**}$. Suppose that (i_{t-1}, b_t) is part of a competitive equilibrium that does not converge to the bubble-free steady state $(i^*, 0)$. We claim that the competitive equilibrium converges to the bubbly steady state (i^{**}, b^{**}) . Indeed, it is necessarily the case that (i_{t-1+s}, b_{t+s}) is in region A for all $s \geq 0$. This implies that $i^{**} \geq i_{t-1+s} \geq i_{t-1+s-1} \geq \dots \geq i_{t-1}$ and $0 \leq b_{t+s} \leq b_{t+s-1} \leq \dots \leq b_t$. Hence there exists $\tilde{i} \in [i_{t-1}, i^{**}]$ and $\tilde{b} \in [0, b_t]$ such that (i_{t-1+s}, b_{t+s}) converges to (\tilde{i}, \tilde{b}) . Moreover, (\tilde{i}, \tilde{b}) is necessarily a steady state. Since the economy is not converging to $(i^*, 0)$ by assumption, we have $(\tilde{i}, \tilde{b}) = (i^{**}, b^{**})$ so that the economy converges to the bubbly steady state.

Similarly, consider a point in region (i_{t-1}, b_t) in region C with $b_t \leq b^{**}$. Suppose that (i_{t-1}, b_t) is part of a competitive equilibrium that does not converge to the bubble-free steady state $(i^*, 0)$. We claim that the competitive equilibrium converges to the bubbly steady state (i^{**}, b^{**}) . Indeed, it is necessarily the case that (i_{t-1+s}, b_{t+s}) is in region C for all $s \geq 0$. This implies that $i^{**} \leq i_{t-1+s} \leq i_{t-1+s-1} \leq \dots \leq i_{t-1}$ and $b^{**} \geq b_{t+s} \geq b_{t+s-1} \geq \dots \geq b_t$. Hence there exists $\tilde{i} \in [i^{**}, i_{t-1}]$ and $\tilde{b} \in [0, b^{**}]$ such that (i_{t-1+s}, b_{t+s}) converges to (\tilde{i}, \tilde{b}) . Moreover, (\tilde{i}, \tilde{b}) is necessarily a steady state. Since the economy is not converging to $(i^*, 0)$ by assumption, we have $(\tilde{i}, \tilde{b}) = (i^{**}, b^{**})$ so that the economy converges to the bubbly steady state.

Collecting our results, we have proved that if (i_{t-1}, b_t) is part of a competitive equilibrium, then (i_{t-1+s}, b_{t+s}) converges over time, either to $(i^*, 0)$ or to (i^{**}, b^{**}) .

We now prove that for every $i_{t-1} > 0$, if (i_{t-1}, b_t) is part of a competitive equilibrium, then for all $b'_t < b_t$, (i_{t-1}, b'_t) is part of a competitive equilibrium that converges to $(i^*, 0)$. We know that (i_{t-1+s}, b_{t+s}) converges over time, either to $(i^*, 0)$ or to (i^{**}, b^{**}) . Using Lemma 1 we know that for all $s \geq 0$, $r_{t+s} > r'_{t+s}$ and $b'_{t+s} < b_{t+s}$. This implies that $b'_{t+s} < A$ for all $s \geq 0$ so that (i_{t-1}, b'_t) is part of a competitive equilibrium. It therefore converges either to $(i^*, 0)$ or to (i^{**}, b^{**}) . Using Lemma 1 we know that for all $s \geq 0$, $r_{t+s} > r'_{t+s}$. Hence $\overline{\lim}_{s \rightarrow \infty} b'_{t+s} < (b'_t/b_t) b^{**} < b^{**}$. Hence (i_{t-1}, b'_t) is part of a competitive equilibrium that converges to $(i^*, 0)$.

We now prove that for every $i_{t-1} > 0$, the set of b_t such that (i_{t-1}, b_t) is part of a competitive equilibrium that converges to the bubble-free steady state $(i^*, 0)$ is open to the right and contains

a neighborhood of 0 . The competitive equilibrium starting at $(i_{t-1}, 0)$ converges to $(i^*, 0)$. Let Γ be a neighborhood of $(i^*, 0)$ such that every point (i, b) in Γ is either in region A or B and satisfies $b < b^{**}$. Then there exists $\bar{s} > 0$ such that for $s \geq \bar{s}$, the competitive equilibrium starting at $(i_{t-1}, 0)$ lies in Γ . We can find $\eta > 0$ such that if $b_t < \eta$, the competitive equilibrium starting at (i_{t-1}, b_t) is such that $(i_{t-1+\bar{s}}, b_{t+\bar{s}})$ is in Γ . But then we know that it converges to $(i^*, 0)$. This proves that the set of b_t such that (i_{t-1}, b_t) is part of a competitive equilibrium that converges to the bubble-free steady state contains a neighborhood of 0 . Now consider $b_t > 0$ such that (i_{t-1}, b_t) is part of a competitive equilibrium that converges to the bubble-free steady state. Then there exists $\bar{s} > 0$ such that for $s \geq \bar{s}$, the competitive equilibrium starting at (i_{t-1}, b_t) lies in Γ . We can find $\eta > 0$ such that if $b'_t < b_t + \eta$, the competitive equilibrium starting at (i_{t-1}, b'_t) lies in Γ at date $t + \bar{s}$. But then we know that it converges to $(i^*, 0)$. This proves that the set of b_t such that (i_{t-1}, b_t) is part of a competitive equilibrium that converges to the bubble-free steady state is open to the right.

We now prove that for every $i_{t-1} > 0$, the set of b_t such that (i_{t-1}, b_t) is part of a competitive equilibrium is closed to the right. Consider an increasing and strictly positive sequence $\{b_t^n\}_{n \geq 0}$ with $\lim_{n \rightarrow \infty} b_{t+s}^n = b_t$, such that there exists a competitive equilibrium starting at (i_{t-1}^n, b_t^n) with $i_{t-1}^n = i_{t-1}$. Using Lemma 1, we know that $i_{t+s-1}^n \geq i_{t+s-1}^{n-1} \geq \dots \geq i_{t+s-1}^0$, $b_{t+s}^n \geq b_{t+s}^{n-1} \geq \dots \geq b_{t+s}^0$ and $r_{t+s+1}^n \geq r_{t+s+1}^{n-1} \geq \dots \geq r_{t+s+1}^0$. We claim that for every $s \geq 0$, $\lim_{n \rightarrow \infty} b_{t+s}^n < A$. If not, then $\lim_{n \rightarrow \infty} r_{t+s+1}^n = +\infty$. But then $b_{t+s+1}^n \geq b_t^0 [(1 + r_{t+1}^0) (1 + r_{t+2}^0) \dots (1 + r_{t+s}^0)] (1 + r_{t+s+1}^n)$ so that $\lim_{n \rightarrow \infty} b_{t+s+1}^n = +\infty$, and hence b_{t+s+1}^n exceeds A for some n , a contradiction. We can now define for all $s \geq 0$, $i_{t+s-1} = \lim_{n \rightarrow \infty} i_{t+s-1}^n$, $b_{t+s} = \lim_{n \rightarrow \infty} b_{t+s}^n$ and $r_{t+s} = \lim_{n \rightarrow \infty} r_{t+s}^n$. This constitutes a competitive equilibrium.

Collecting our results, we know that for every $i_{t-1} > 0$, the set of b_t such that (i_{t-1}, b_t) is part of a competitive equilibrium is a closed interval with non-empty interior of the form $[0, \bar{b}(i_{t-1})]$. For $b_t \in [0, \bar{b}(i_{t-1}))$, the competitive equilibrium starting at (i_{t-1}, b_t) converges either to $(i^*, 0)$. Since the set of b_t such that (i_{t-1}, b_t) is part of a competitive equilibrium that converges to $(i^*, 0)$ is open to the right, $(i_{t-1}, \bar{b}(i_{t-1}))$ cannot converge to $(i^*, 0)$. It therefore converges to (i^{**}, b^{**}) .

In addition we know that $\bar{b}(i_{t-1}) \geq b^{**}$ for $i_{t-1} < i^{**}$ and $\bar{b}(i_{t-1}) \leq b^{**}$ for $i_{t-1} > i^{**}$. Moreover we know that $\Phi^b(\bar{b}(i_{t-1}), i_{t-1}) = \bar{b}(\Phi^i(\bar{b}(i_{t-1}), i_{t-1}))$. We now claim that $\bar{b}(i_{t-1})$ is decreasing in i_{t-1} . Towards a contradiction, suppose that there exists $i'_{t-1} > i_{t-1}$ with $b'_t = \bar{b}(i'_{t-1}) \geq b_t = \bar{b}(i_{t-1})$. Then using Lemma 1, we can infer that $b'_{t+s} > \frac{b'_t}{b_t} b_{t+s}$. This contradicts $\lim_{s \rightarrow \infty} b'_{t+s} = \lim_{s \rightarrow \infty} b_{t+s} = b^{**}$.

Combining these results yields Proposition 3.

Proof of Proposition 4. Denote by c_{t-2} the resources consumed by entrepreneurs of generation $t-2$ in their old age at time t , and denote by d_{t-2} the resources transferred to the original holders of trees in period t . Suppose first that $\rho_1 > 1$. If an allocation $\{c_{t-2}^*, d_{t-2}^*, i_{t-2}^*\}_{t \geq 0}$ solves the following program for some set of Pareto weights $\{(\lambda_{t-2}, \mu_{t-2})\}_{t \geq 0}$, then it is dynamically efficient:

$$\max_{\{c_{t-2}, d_{t-2}, i_{t-2}\}_{t \geq 0}} \sum_{t=0}^{\infty} \lambda_{t-2} c_{t-2} + \mu_{t-2} d_{t-2} \quad (23)$$

s.t.

$$\begin{aligned} c_{t-2} + d_{t-2} + i_{t-1} &\leq \rho_1 i_{t-2} + A + l \\ i_{-2} &= \bar{i}_{-2}^* \\ c_{t-2} &\geq 0 \\ i_{t-2} &\geq 0 \end{aligned}$$

It is important to emphasize that this program abstracts from pledgeability constraints. Assuming that the positivity constraints are not binding, a necessary and sufficient condition is that for all $t \geq 0$, the resource constraint holds with equality and

$$\lambda_{t-2} = \mu_{t-2} = \rho_1^{-t} \lambda_{-2}. \quad (24)$$

Moreover, with Pareto weights chosen as in (24), the objective function in the planning problem is well defined and the maximum is finite. Since all our competitive equilibria satisfy the constraints of the planning problem with equality, the corresponding allocations are solutions of the planning problem, and are therefore dynamically efficient.

Consider an allocation $\{c_{t-2}^*, d_{t-2}^*, i_{t-2}^*\}_{t \geq 0}$. If this allocation does not solve the following planning problem, then it is not constrained dynamically efficient:

$$\max_{\{c_{t-2}, d_{t-2}, i_{t-2}\}_{t \geq 0}} c_{-2} \quad (25)$$

s.t.

$$\begin{aligned} c_{t-2} &\geq c_{t-2}^* \text{ for all } t \geq 1 \\ d_{t-2} &\geq d_{t-2}^* \end{aligned}$$

$$c_{t-2} + d_{t-2} + i_{t-1} \leq \rho_1 i_{t-2} + A + l$$

$$c_{t-2} \geq (\rho_1 - \rho_0) i_{t-2}$$

$$i_{-2} = \bar{i}_{-2}$$

$$c_{t-2} \geq 0$$

$$i_{t-2} \geq 0$$

Note that this constrained social planning problem (25) incorporates pledgeability constraints $c_{t-2} \geq (\rho_1 - \rho_0) i_{t-2}$.

Suppose now that $\rho_1 < 1$ and consider a competitive equilibrium allocation $\{c_{t-2}^*, d_{t-2}^*, i_{t-2}^*\}_{t \geq 0}$ such that investment is strictly positive in every period (this is the case in every competitive equilibrium). We reduce investment i_{-1} in period 0 by ε and give the freed resources to the old entrepreneurs of generation -2 . Resources available at date 1 have decreased by $\rho_1 \varepsilon$. Correspondingly, we reduce investment in period 1 by $\rho_1 \varepsilon$. Resources available at date 2 have decreased by $\rho_1^2 \varepsilon$. Correspondingly, we reduce investment in period 2 by $\rho_1^2 \varepsilon$. We keep doing this ad infinitum: we reduce investment in period t by $\rho_1^t \varepsilon$. The corresponding allocation is resource feasible, satisfies the pledgeability constraints, and all agents are exactly as well off except for the old entrepreneurs of generation -2 who are better off. Hence $\{c_{t-2}^*, d_{t-2}^*, i_{t-2}^*\}_{t \geq 0}$ does not solve the constrained social planning problem (25) and is therefore not constrained dynamically efficient.

Proof of Proposition 5. The proposition is a direct consequence of expression (17) for r^* derived in appendix A1.

A.3 Relationship with Woodford (1990).

In this appendix, we clarify the relationship of our model with that of Woodford (1990). We show that the mechanism by which bubbles affect investment is quite different in our model and in Woodford's model.

Our model is closest to Woodford's in a particular case of ours, when $\rho_0 = 0$ and $l = 0$. We by no means imply that this particular case is exactly the model he analyzed. There are important differences. Notably in his model, preferences are not linear, production functions are concave, and agents are infinitely lived. In particular, the discontinuity that we emphasize below in our version of Woodford's model would not occur in his model. Nonetheless, these results are useful to emphasize how different the mechanisms by which bubbles affect investment are in our model and in his.

When $\rho_0 = 0$ and $l = 0$, in the absence of a bubble, there are no stores of value. As a consequence, in the bubble-free steady state (there is no transitional dynamics), investment i^{W*} is equal to 0: (i) the returns to investment are entirely non-pledgeable so that no outside funds can be raised in the intermediate period; (ii) there is no way for the entrepreneurs to transfer funds from the early period to the intermediate period. The implicit interest rate is $1 + r^{W*} = 0$. By contrast, in the bubbly steady state, $i^{W**} = A$ and the interest rate is $1 + r^{W**} = 1$. The bubble size b^{W**} is commensurate to the amount of wealth that entrepreneurs have in the early period of their life: $b^{W**} = A$. The bubble provides stores of value and allows the entrepreneurs to transfer their funds to the intermediate period of their life where they can invest. The bubble simply allows different generations to realize some trades that were impossible in its absence: they now have an asset that they can pass on to each other.

Consider now our model when $\rho_0 > 0$. We maintain the assumption that $l = 0$. In the bubble-free steady state, we have $i^* = \frac{A}{1-\rho_0}$ and $1 + r^* = \frac{\rho_0}{1-\rho_0}$. If $1 + r^* < 1$, there is also a bubbly steady state where investment is given by $i^{**} = \frac{A}{1-\rho_0}$ and $1 + r^{**} = 1$. Note that we have $i^{**} = i^*$. Hence, bubbles have no effect on investment: in contrast with both Woodford's model and our version of it where bubbles crowd investment in, there is neither crowding in nor crowding out in our model when $\rho_0 > 0$ and $l = 0$.

Recall that our intuition is that the effect of bubbles on investment can be understood as follows: bubbles raise the interest rate and therefore crowd investment in if outside liquidity is positive. In considering the case $l = 0$, we have essentially gotten rid of the consumers sector. That in this context, bubbles have no effect on investment is therefore consistent with our intuition.²³

With $l = 0$, steady state investment at the bubble-free steady state is discontinuous at $\rho_0 = 0$. By contrast, investment at the bubbly steady state is continuous at $\rho_0 = 0$. Both in Woodford's model and in our version of it, bubbles systematically crowd investment in, even when $l = 0$. When $\rho_0 > 0$ this direct effect disappears and bubbles have no effect on investment when $l = 0$.

We have restricted our discussion to the case $l = 0$. Note for completeness that investment and interest rates in all the steady states that we consider in this section (both with $\rho_0 > 0$ and $\rho_0 = 0$) are continuous in l .

A.4 Proofs for Section V.1

In this Appendix A4, we make use of some the results we established for the case $l < 0$ in Appendices A1 and A2 to prove the results in Section V.1.

²³For crowding in to occur in Woodford's model, in addition, there needs to be sufficient intertemporal substitutability in consumption.

Proof of Proposition 9. Define $\tilde{l} \equiv -l$. The \tilde{b}^i and \tilde{b}^b schedules are now

$$b_t = -(1 - \rho_0) \rho_0 \frac{1}{\tilde{l}} i_{t-1}^2 + \frac{\rho_0 i_{t-1}}{\tilde{l}} \left[A + (1 - 2\rho_0) \frac{\tilde{l}}{\rho_0} \right] + \tilde{l}$$

and

$$b_t = -\rho_0^2 i_{t-1} + (1 - \rho_0) A + \tilde{l}$$

Investment is given by the following equation

$$i_t = \frac{\sqrt{\frac{1}{\rho_0} (1 - \rho_0) \tilde{l} + \rho_0 i_{t-1} + A + \left[\frac{1}{\rho_0} (1 - \rho_0) \tilde{l} + \rho_0 i_{t-1} + A \right]^2 - 4 \frac{1}{\rho_0} \tilde{l} \left[b_t + \rho_0 i_{t-1} - \tilde{l} \right]}}{2}$$

We have $b_t^i(0) = -l > 0$ and $b_t^b(0) = (1 - \rho_0)(A - l)$. As long as (B) holds, $b_t^b(0) > 0$. There are two intersections of the functions $b_t^i(i_{t-1})$ and $b_t^b(i_{t-1})$ given by

$$i_1 = \frac{A}{1 - \rho_0}$$

$$i_2 = \frac{1 - \rho_0 \tilde{l}}{\rho_0}$$

Condition (11) guarantees that $i_2 < i_1$.

We have

$$\tilde{b}^b(i_{t-1}) \geq \tilde{b}^i(i_{t-1})$$

if and only if $i_{t-1} \notin [i_2, i_1]$. Moreover, the function $b_t^i(i_{t-1})$ reaches its maximum to the left of i_1 so that $b_t^i(i_{t-1})$ is decreasing for $i_{t-1} \geq i_1$ (it decreases to $-\infty$ as i_{t-1} goes to $+\infty$). The bubble-free steady state i^* is given by $b_t^i(i^*) = 0$. We necessarily have $i^* > i_1$.

A phase diagram analysis based on the lemma below shows that the bubbly steady state corresponding to i_1 is saddle path stable, while that corresponding to i_2 is unstable.

Lemma 3 *The interest rate $r_{t+1} = \Phi^r(i_{t-1}, b_t)$ is increasing in i_{t-1} and b_t . Investment $i_t = \Phi^i(i_{t-1}, b_t)$ decreases with the state variable b_t . Investment $i_t = \Phi^i(i_{t-1}, b_t)$ is greater (smaller) than i_{t-1} if and only if b_t is smaller (greater) than $b_t^i(i_{t-1})$. The bubble $b_t = \Phi^b(i_{t-1}, b_t)$ is greater (smaller) than b_{t-1} if and only if b_t is greater (smaller) than $b_t^b(i_{t-1})$.*

The intuition for this lemma is simple: the presence of the bubble lowers the price of outside

liquidity, or in other words, increases the interest rate. Since entrepreneurs are now net suppliers of liquidity, this decreases corporate net worth and investment.

Proof of Remark 2. Here we extend the results of the model to the case where entrepreneurs have flexibility in their savings/dissavings choices. We show that our main results generalize. Once we allow for flexibility in the entrepreneurs savings/dissavings choices, it is still true that bubbles boost investment when outside liquidity l exceeds some threshold, this threshold need not be equal to zero. By studying two examples, we now show that the threshold may indeed be positive or negative.

Example: log preferences. Suppose that entrepreneurs have utility from consumption vector (c^y, c^m, c^0) in the three periods of their life:

$$U = \log c^y + \beta \log c^m + \beta^2 \log c^0.$$

Let e denote their endowment when young. The rates of return on generation- t 's savings when young is $1 + r_t$; the rate of return on their investment when credit-constrained at $t + 1$ is

$$1 + \hat{r}_{t+1} = \frac{\rho_1 - \rho_0}{1 - \frac{\rho_0}{1+r_{t+1}}}.$$

Optimal saving behavior implies that they save

$$A \equiv \frac{\beta + \beta^2}{1 + \beta + \beta^2} e$$

when young. When middle aged, they contemplate consumptions:

$$c^m = (1 + r_t)A - \left(1 - \frac{\rho_0}{1 + r_{t+1}}\right) i_t \quad \text{and} \quad c^0 = (1 + \hat{r}_{t+1}) \left(1 - \frac{\rho_0}{1 + r_{t+1}}\right) i_t.$$

The asset supply and asset demand equations become respectively

$$i_t^s(i_{t-1}, r_{t+1}) = \frac{\beta}{1 + \beta} \frac{b_t + l + \rho_0 i_{t-1}}{1 - \frac{\rho_0}{1+r_{t+1}}}$$

and

$$i_t^d(r_{t+1}) \equiv \frac{A(1 + r_{t+1}) - l - b_t(1 + r_{t+1})}{\rho_0}.$$

The condition for a bubble to exist becomes

$$\frac{1 - \rho_0 \left(1 + \frac{\beta}{1+\beta}\right)}{1 - \rho_0} > \frac{l}{A}. \quad (\text{B}^{\text{iv}})$$

The analysis of the steady states and the dynamics of the economy is very similar to Section III. It is omitted for conciseness. Instead, we focus on one important object that behaves differently in this setup: the conditions under which bubbles increase investment. We find it most illustrative to focus on steady states and characterize the threshold for outside liquidity above which investment is higher at the bubbly steady state than at the bubble-free steady state.

Proposition 11 *Suppose that preferences are log and that (B^{iv}) holds. Then there exists a threshold $l_0 > 0$ such that for $l > l_0$, investment at the bubbly steady state is higher than at the bubble-free steady state $i^{**} > i^*$ and for $l < l_0$, investment at the bubbly steady state is lower than at the bubble-free steady state $i^{**} < i^*$.*

Proof. Let $\alpha = \beta / (1 + \beta)$. Investment in the bubbly steady state is given by

$$i^{**} = \frac{\alpha A}{1 - \rho_0}$$

and investment in the bubble-free steady state is given by

$$i^* = \frac{\rho_0 A - l(1 - 2\alpha\rho_0) + \sqrt{[\rho_0 A - l(1 - 2\alpha\rho_0)]^2 + 4\alpha l^2 \rho_0 (1 - \alpha\rho_0)}}{2\rho_0 (1 - \alpha\rho_0)}$$

and the interest rate is

$$1 + r^* = \frac{\rho_0 A + l + \sqrt{[\rho_0 A - l(1 - 2\alpha\rho_0)]^2 + 4\alpha l^2 \rho_0 (1 - \alpha\rho_0)}}{2A(1 - \alpha\rho_0)}.$$

It can be verified that (B^{iv}) is equivalent to $r^* < 0$.

After a few manipulations, it can be verified that $i^{**} > i^*$ if and only if

$$l^2 - \frac{1 - 2\alpha\rho_0}{1 - \rho_0} Al - \frac{\rho_0}{1 - \rho_0} \left[\alpha \frac{1 - \alpha\rho_0}{1 - \rho_0} - 1 \right] A^2 < 0.$$

Together with condition (B^{iv}), this is equivalent to $l \in [l_0, l_1]$ where

$$l_0 = A \frac{\frac{1-2\alpha\rho_0}{1-\rho_0} - \sqrt{\left(\frac{1-2\alpha\rho_0}{1-\rho_0}\right)^2 - 4\rho_0(1-\alpha)\frac{1-\rho_0(1+\alpha)}{1-\rho_0}}}{2}$$

$$l_1 = A \frac{\frac{1-2\alpha\rho_0}{1-\rho_0} + \sqrt{\left(\frac{1-2\alpha\rho_0}{1-\rho_0}\right)^2 - 4\rho_0(1-\alpha)\frac{1-\rho_0(1+\alpha)}{1-\rho_0}}}{2}.$$

It can be shown that as long as (B^{iv}) holds, $l_0 > 0$ and $l < l_1$. ■

Some intuition can be given along the following lines. Let us compare log preferences with the preferences used in Section III for any given level of outside liquidity l . Since now only a fraction $\beta/(1+\beta)$ of middle-aged wealth is spent on investment by entrepreneurs, the liquidity effect of bubbles through the impact of increased interest rates on internal funds is mitigated. On the other hand, the leverage effect through the impact of increased interest rates on leverage is unaffected.

Example: linear-log preferences. We now sketch a specification of preferences for which even for $l = 0$, investment at the bubbly steady state is higher than at the bubble-free steady state. We take

$$U = c^y + \tilde{\beta} [c^m (1 + \beta)]^{\frac{1}{1+\beta}} [c^o (1 + \beta) / \beta]^{\frac{\beta}{1+\beta}}$$

and refer to these preferences as linear-log. Linear-log preferences lead to the same asset supply and asset demand equations as above, with the difference that now $A = A(r_t, r_{t+1})$ is endogenous, with

$$A(r_t, r_{t+1}) = \begin{cases} e & \text{if } (1+r_t) \left(\frac{\rho_1 - \rho_0}{1 - \frac{\rho_0}{1+r_{t+1}}} \right)^{\frac{\beta}{1+\beta}} > \frac{1}{\beta}, \\ 0 & \text{if } (1+r_t) \left(\frac{\rho_1 - \rho_0}{1 - \frac{\rho_0}{1+r_{t+1}}} \right)^{\frac{\beta}{1+\beta}} < \frac{1}{\beta}. \end{cases} \quad (26)$$

The difference with the log preferences of the previous example is that now the intertemporal elasticity of substitution between c^y and a composite period that aggregates c^m and c^o is equal to infinity. This feature reinforces the liquidity effect: bubbles, by increasing the interest rate, can increase savings when young.

The condition for a bubble to exist is:

$$\frac{1 - \rho_0 \left(1 + \frac{\beta}{1+\beta} \right)}{1 - \rho_0} > \frac{l}{e}. \quad (\text{B}^v)$$

This condition is equivalent to $r^* < 0$, where r^* is the interest rate at the bubble-free steady state. It is verified for $l = 0$ if and only if $\rho_0(1 + \beta/(1 + \beta)) < 1$.

We illustrate our point by deriving conditions for which investment i^{**} at the bubbly steady state is strictly positive but investment i^* at the bubble-free steady state is zero. Assume that (B^v) is verified. It is possible to find $\tilde{\beta} > 0$ such that $A(r^*, r^*) = 0$ and $A(r^{**}, r^{**}) = e$ if and only if

$$\frac{1}{1 + r^*} \left(\frac{1 - \frac{\rho_0}{1 + r^*}}{1 - \rho_0} \right)^{\frac{\beta}{1 + \beta}} > 1. \quad (27)$$

Since we have assumed that (B^v) holds or equivalently that $r^* < 0$, condition (27) is always verified for β close enough to 0.

Proposition 12 *Suppose that preferences are linear-log, that $l = 0$, and that (B^v) holds. If condition (27) is verified, then there exists $\tilde{\beta} > 0$ such that investment at the bubbly steady state is higher than investment at the bubble-free steady state $i^{**} > i^* = 0$. This condition is always verified when β is small enough.*

A.5 Proofs for Section V.3

Proof of Proposition 10. The proof proceeds as follows. Consider the economy where trees supplied by consumers are fixed and equal to $\tilde{l} = l(r^*)$. The corresponding variables for this economy are denoted with a tilde. We can use the phase diagram derived in Sections III.1 and V.1 to analyze this economy. At the intersection of \tilde{b}^i and \tilde{b}^b , investment is equal to $\tilde{i}^{**} = \frac{A}{1 - \rho_0}$, the bubble is equal to $\tilde{b}^{**} = A - \frac{1 - 2\rho_0}{1 - \rho_0} - \tilde{l}$ (possibly negative) and the interest rate is equal to 0. Note that this economy is such that, $i^* = \tilde{i}^*$, $r^* = \tilde{r}^*$ and $i^{**} = \tilde{i}^{**}$. Hence $i^{**} > i^*$ if and only if $\tilde{i}^{**} > \tilde{i}^*$.

Let us first prove by contradiction that (B^{**}) implies that $r^* < 0$. Assume that $r^* \geq 0$. Then $\tilde{l} < l(n)$ so that $\tilde{b}^{**} > 0$. But this is possible only if $\tilde{r}^* < 0$ i.e. $r^* < 0$. This is a contradiction. Hence $r^* < 0$.

Let us now move on to prove (i) and (ii) in Proposition 10. Suppose first that $\tilde{l} > 0$. We know from the phase diagram analysis in Section III.1 and the fact that $r^* < 0$ that $\tilde{i}^{**} > \tilde{i}^*$. We therefore conclude that $i^{**} > i^*$. The proof of (ii) proceeds exactly along the same lines.